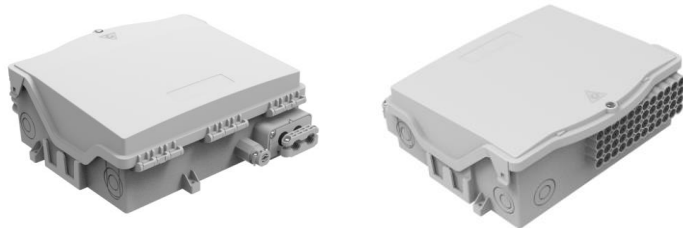




BEP 12



BEP 48

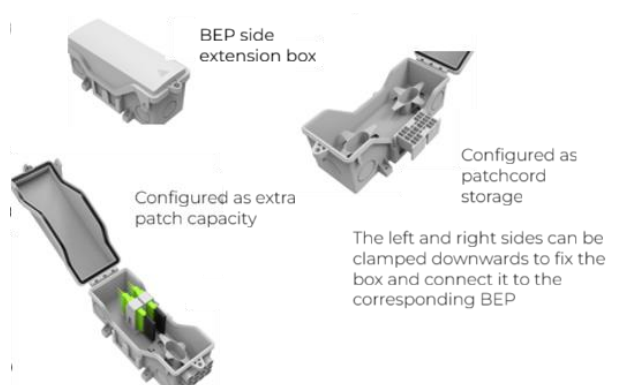
DESIGN & CONSTRUCTION

- Modular system.
- For facade application.
- IP65 rated.
- Distribution boxes up to 48 individual customer drops.
- Allow indoor cabling mutualisation.
- One oval port for midspan access.
- One Circular port.
- 12/48 single drop cables.

Product Description

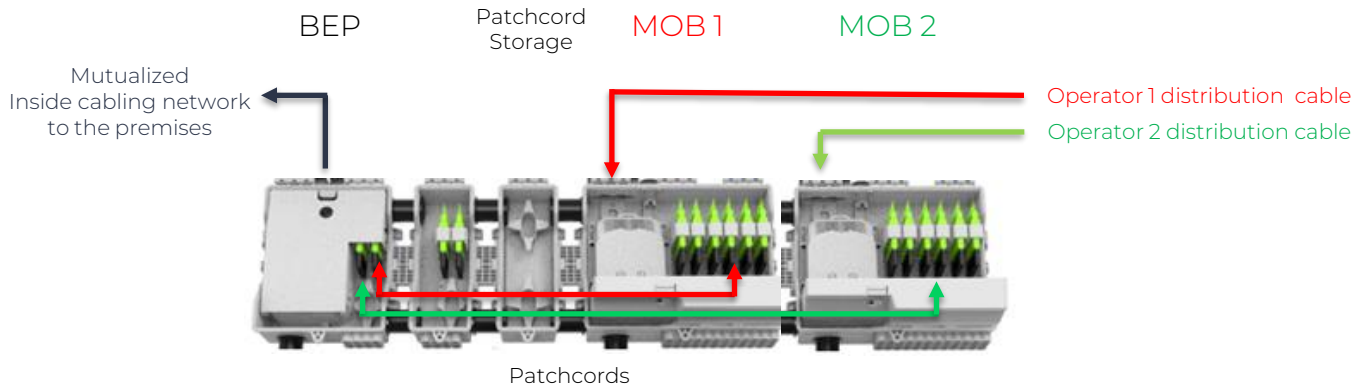
The Building Entry Point BEP System can be installed inside a MDU basement or on an external wall. Dedicated for a FTTH network, it is a distribution Point to feed the MDU customers from the external Network. The BEP System is based on two main boxes BEP12 and BP48. Also available Extension boxes configured to extend the patch capacity or storage capacities. BEP12 and BEP48 can be equipped with splices trays for up to 96 splices. As an option PLC splitters can installed in the splice trays. A patch panel inside the box accept SC adapters and pigtails. A secured internal cover restrict the access to the splicing area. The BEP boxes can be supplied with factory installed pretermitted cable tails from 20 to 100 metres.

The BEP boxes can be assembled side by side. Dedicated connection tubes can allow communication between the boxes, for pigtails to patchcord



Product Design

The BEP System allow to mutualize the inside cabling network:



The boxes configured as BEP feeds the customers inside the MDU.
The boxes configured as MOB (Multi Operator Boxes) accept the Operator distribution cable.

The MOB boxes and BEP boxes are linked together with patchcord.

Technical data

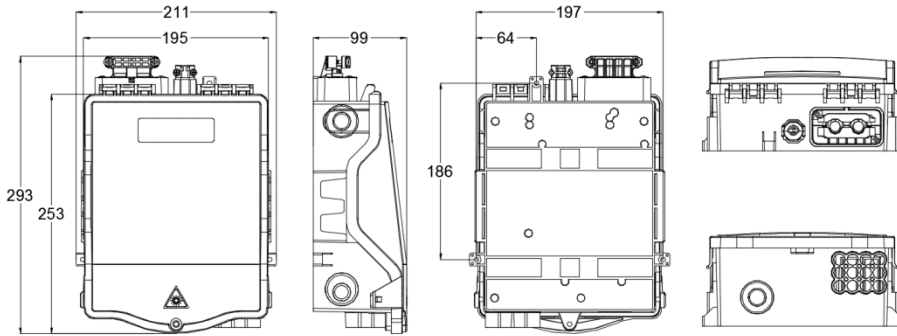
	BEP 12	BEP 48	Extention box with patch panel	Extention box for storage
Required Space Envelope(mm)	(h) 293 x (w) 211 x (d) 99	(h) 293 x (w) 306 x (d) 110	(h) 261 x (w) 111 x (d) 99	(h) 260 x (w) 111 x (d) 99
Oval Port Cable Range	6 to 12,5mm	6 to 12,5mm	NA	NA
Circular Port Cable Range	6 to 12,5mm	6 to 12,5mm	NA	NA
Drop Cable Range	3mm	3mm	3mm	3mm
Splice Capacity	96 (8x12)	96 (8x12)	NA	NA
Patch Capacity (SC)	12	48	12	NA

- Operating temperature: -40°C to +60°C (5 to 95% RH)
- Material: PC+ABS, , Silicone (cable entry seals)*
- Colour: External parts are Grey RAL 7035 with UV stability.
- Testing:
 - Ingress protection: IP65
 - Dry heat: IEC 60068-2-2 Test Bb
 - Change of temperature: IEC 60068-2-14
 - Damp heat: IEC 60068-2-78
 - Vibration: IEC 60068-2-6
 - Shock: IEC 60068-2-27
 - Impact: 0.25kg / 1m
 - Cable retention: 75N / 10min

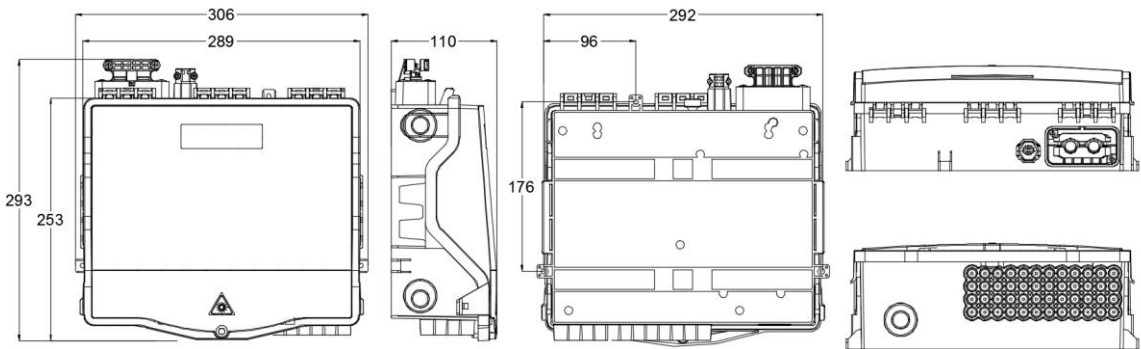
*indicates to be confirmed assuming no reduction in functionality

Main characteristics

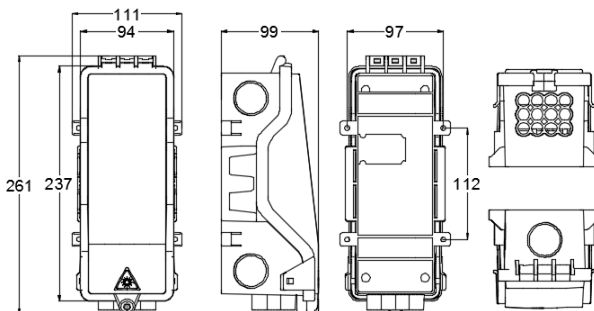
BEP 12



BEP 48



Extension box





DESIGN & CONSTRUCTION

- Total enclosed structure.
- Material: PC+ABS.
- IP65 rated.
- Installation method: pole-mounted, wall-mounted.
- Input type/type of output – SCA.

Product Description

The equipment is used as a termination point for the feeder cable to connect with drop cable in FTTx communication network system. The fibre splicing, splitting, distribution can be done in this box, and meanwhile it provides solid protection and management for the FTTx network building. Including a locking mechanism to protect the elements inside.

Technical data

- Max capacity (fibres): 2 / 12
- Cable outlet size 6 / 8mm
- Drop Cable outlet size 3mm
- Required space envelope (mm): (h) 293 x (w) 211 x (d) 99

Main characteristics

Box Contents

- 2 Protective grommets,
- 1 BEP Single cable entry plug,
- 1 BEP 6mm Seal,
- 1 Key,
- 1 T20 Tool.
- 2/4/8/12 SCA Pigtailed and Adapters
- 12 Splice Protectors

Logistics

Packing Dimensions mm: (h) 305 x (w) 220 x (d) 110

Packed Weight (kg): 1.2kg

Packaging details: Fully recyclable cardboard box.

Part Numbers

Prysmian Part No.	Description	Number of Adapters	Number of Pigtailed	Number of Circular Port	Oval Port	Number of Drop Cables
XCPSC05256	BEP with 2 SCA Pigtailed and Adapters	2	2	1	N	12
XCPSC05257	BEP with 4 SCA Pigtailed and Adapters	4	4	1	N	12
XCPSC05258	BEP with 8 SCA Pigtailed and Adapters	8	8	1	N	12
XCPSC05259	BEP with 12 SCA Pigtailed and Adapters	12	12	1	N	12

BEP 16, 24 (BEP12 box + 12FO extension box)[®]

Product Design



DESIGN & CONSTRUCTION

- Total enclosed structure.
- Material: PC+ABS.
- IP65 rated.
- Installation method: pole-mounted, wall-mounted.
- Input type/type of output – SCA.

Product Description

The equipment is used as a termination point for the feeder cable to connect with drop cable in FTTx communication network system. The fibre splicing, splitting, distribution can be done in this box, and meanwhile it provides solid protection and management for the FTTx network building. Including a locking mechanism to protect the elements inside.

Technical data

- Max capacity (fibres): 16 / 24
- Cable outlet size: 6 / 8mm
- Drop Cable outlet size: 3mm
- Required space envelope (mm): (h) 293 x (w) 211 x (d) 99 - (BEP 12 BOX)
- (h) 261 x (w) 111 x (d) 99 – (EXTENSION BOX)
- (h) 293 x (w) 322 x (d) 99 - (BEP 12 BOX + EXTENSION BOX)

Main characteristics

Box Contents

- 2 Protective grommets,
- 1 BEP Single cable entry plug,
- 2 Connection Tubes,
- 1 BEP 6mm Seal,
- 1 Key,
- 1 T20 Tool.
- 16 or 24 SCA Pigtailed and Adapters
- 24 Splice Protectors

Logistics

Packing Dimensions

mm: (h) 305 x (w) 220 x (d) 110 – BEP 12 BOX

mm: (h) 270 x (w) 120 x (d) 115 – EXTENSION BOX

Packed Weight (kg):

1.2kg - BEP 12 BOX

0.6kg – EXTENSION BOX

Packaging details: Fully recyclable cardboard box.

Part Numbers

Prysmian Part No.	Description	Number of Adapters	Number of Pigtailed	Number of Circular Port	Oval Port	Number of Drop Cables
XCPSC05260	BEP with 16 SCA Pigtailed and Adapters	16	16	1	N	12
XCPSC05261	BEP with 24 SCA Pigtailed and Adapters	24	24	1	N	16

(BEP48 standalone box)[®]

Product Design



DESIGN & CONSTRUCTION

- Total enclosed structure.
- Material: PC+ABS.
- IP65 rated.
- Installation method: pole-mounted, wall-mounted.
- Input type/type of output – SCA.

Product Description

The equipment is used as a termination point for the feeder cable to connect with drop cable in FTTx communication network system. The fibre splicing, splitting, distribution can be done in this box, and meanwhile it provides solid protection and management for the FTTx network building. The fibre splicing, splitting, distribution can be done in this box, and meanwhile it provides solid protection and management for the FTTx network building. Including a locking mechanism to protect the elements inside.

Technical data

- Max capacity (fibres): 48
- Cable outlet size: 6 / 8mm
- Drop Cable outlet size: 3mm
- Required space envelope (mm): (h) 306 x (w) 293 x (d) 110mm

Main characteristics

Box Contents

- 2 Protective grommets,
- 1 BEP Single cable entry plug,
- 1 BEP 6mm Seal,
- 1 Key,
- 1 T20 Tool.
- 48 SCA Pigtails and adapter
- 48 Splice protectors

Logistics

Packing Dimensions

mm: (h) 315 x (w) 305 x (d) 125

Packed Weight (kg): 1.8kg

Packaging details: Fully recyclable cardboard box.

Part Numbers

Prysmian Part No.	Description	Number of Adapters	Number of Pigtails	Number of Circular Port	Oval Port	Number of Drop Cables
XCPC05252	BEP with 48 SCA Pigtails and Adapters	48	48	1	N	48

Additional Items

Prysmian Part No.	Description	Details	Image
XCPSC05443	BEP Oval Port	The BEP Oval Port kit can be ordered separately if a loop cable needs to be added. The oval port can accommodate cables with a diameter of 6 to 12mm.	
XCPSC05444	BEP Single Cable Entry Port	The BEP Single Entry Port kit can be ordered separately if a cable needs to be added. The port kit can accommodate cables with a diameter of 6 to 12mm.	
XCPSC05445	BEP Extension Storage Box	The BEP Extension Storage Box can be attached alongside an existing box to allow additional slack storage of patch cords.	
XCPSC05446	BEP Extension Box	The BEP Extension Box can be attached alongside an existing box to increase the splicing and patching capacity by 12.	

© PRYSMIAN 2025, All Rights Reserved

All sizes and values without tolerances are reference values. Specifications are for product as supplied by Prysmian; any modification or alteration afterwards of product may give different result.

The information contained within this document must not be copied, reprinted or reproduced in any form, either wholly or in part, without the written consent of Prysmian. The information is believed to be correct at the time of issue. Prysmian reserves the right to amend this specification without prior notice. This specification is not contractually valid unless specifically authorised by Prysmian.