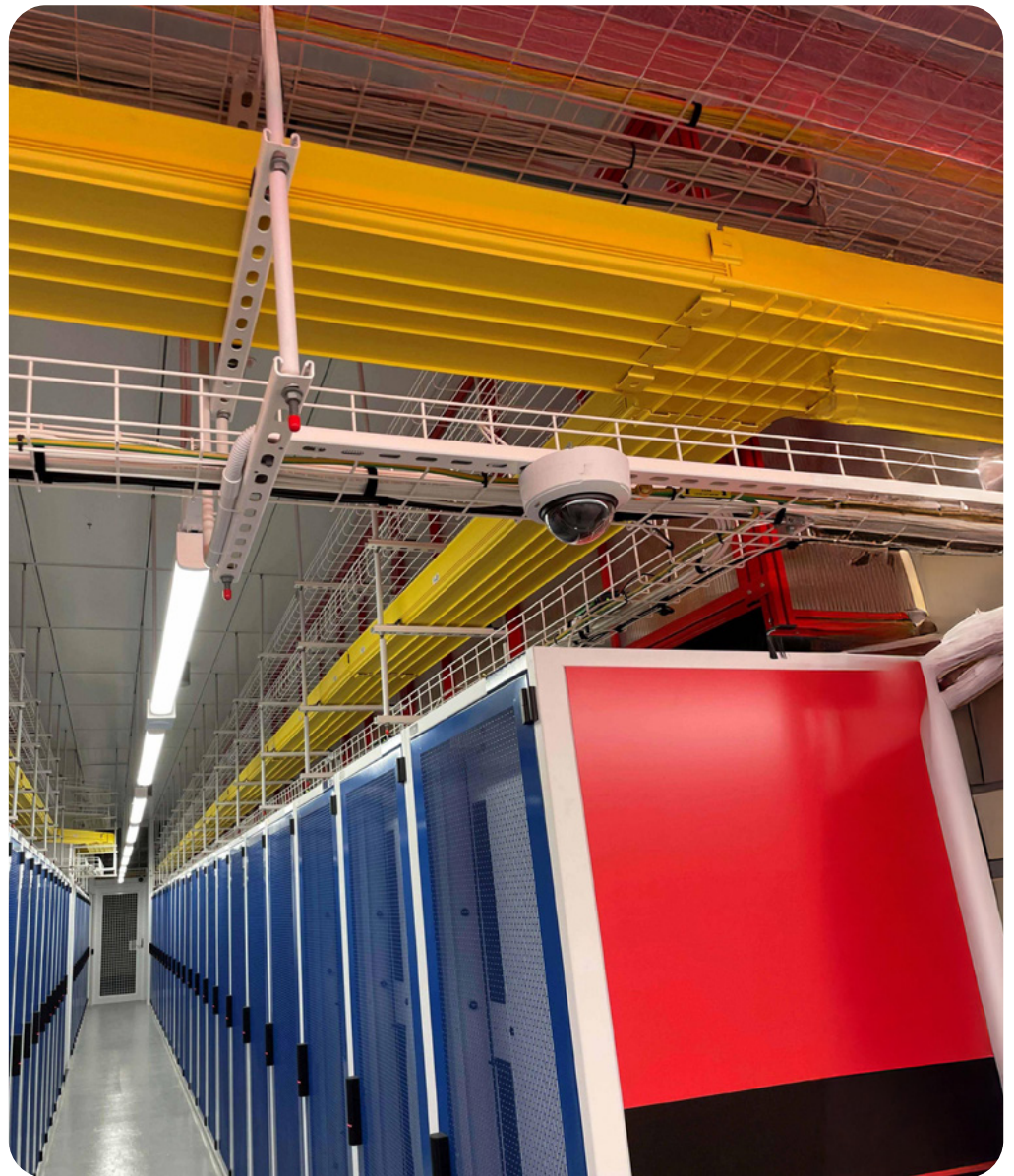


OPTICAL FIBRE DUCTING - RACEWAY

Solutions, products and accessories



ACCELERATING GROWTH

As a leader in optical fibre solutions, Prysmian is powering industries and connecting communities across the world.

We're committed to leading the energy transition and driving digital transformation by harnessing our knowledge, innovation and reach. We're connecting people and businesses across the world with the energy and information they need, and always working towards a more sustainable way of living to ensure a positive impact on the planet.

To power the change, we're joining forces with Warren and Brown Technologies: global experts in fibre and copper communications equipment. Together, we're pioneering new possibilities for digitalisation, accelerating connectivity everywhere and opening up opportunities for industries internationally with cutting-edge cable solutions that support the circular economy worldwide.

Together, we can navigate the way forward.



Contents

Straight duct	11
Joiners	12
Tees, elbows and crosses	13
Breakouts	15
Retainer clips	17
Express outlets	17
Drop-off solutions	18
Reducers	20
Fibre-storage loops	21
End caps	22
Tubing	23
Adaptors	24
Mounting solutions	25
Tooling components	28
Corresponding W&B - Prysmian part numbers	32

THE ULTIMATE FIBRE OPTIC DUCTING RACEWAY SYSTEM BY PRYSMIAN

Optical fibre patch cords are crucial for transmitting vast amounts of critical data in communications networks.

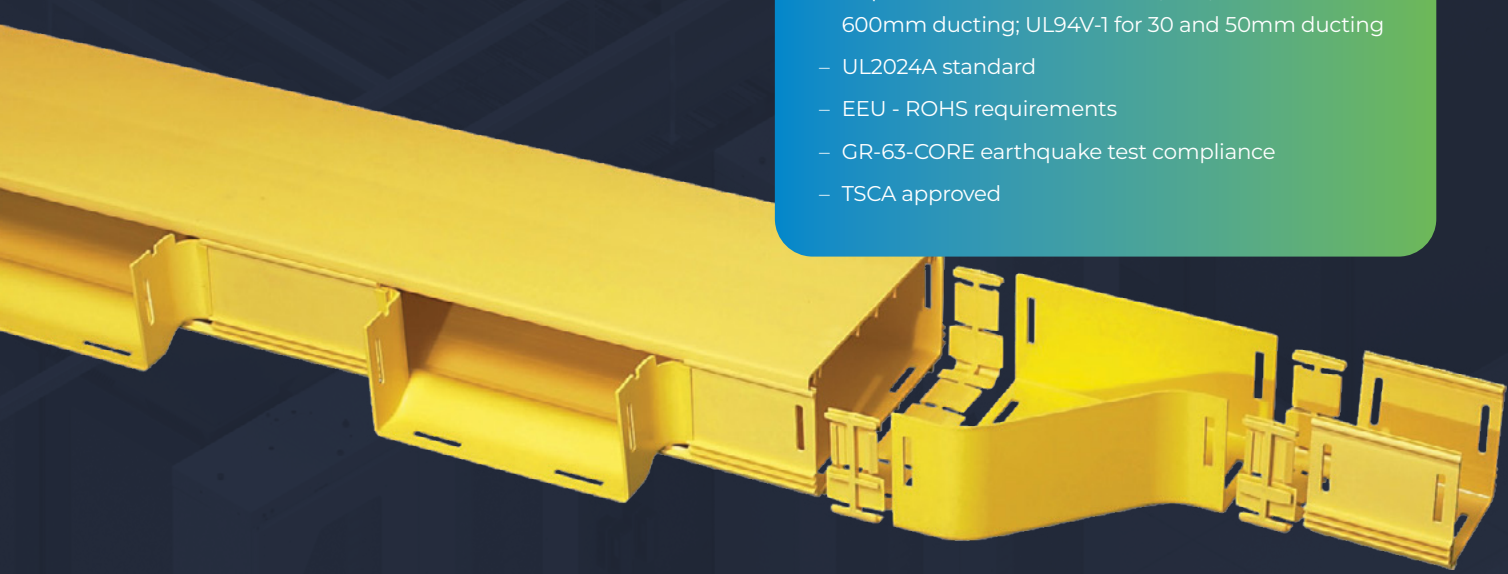
To maintain network reliability, these delicate cables – ranging from 1.6mm to 3mm in diameter – must be safeguarded from heavy electrical and copper data cabling. Traditional routing methods, such as cable trays and baskets, can damage fibre cords and compromise bend radii, leading to costly network downtime. An optical fibre ducting raceway, like Fibre Raceway, prevents these issues and ensures the safety and integrity of your network.

Prysmian's Fibre Raceway system stands out with its pre-slotted, fully recyclable components and unique slotless joiners that require no additional tools for installation. This innovative design simplifies deployment while providing precise protection and management for fibre optic cables. Combining cutting-edge technology with unparalleled functionality, Fibre Raceway enhances both sustainability and infrastructure efficiency.

Our dual joiner options are a key differentiator in the industry. Each component is pre-slotted for effortless assembly and exceptional precision, offering a level of innovation and convenience that sets Prysmian apart from competitors.

Prysmian Ducting Raceway items conform to the following standards and requirements:

- LSZH Low Smoke Zero Halogen
- ISO 9001 Certified Quality Management System by BSI
- Halogen free and fire-retardent plastic requirements: UL94V-0 for 100, 200, 300 and 600mm ducting; UL94V-1 for 30 and 50mm ducting
- UL2024A standard
- EEU - ROHS requirements
- GR-63-CORE earthquake test compliance
- TSCA approved



WHICH DUCTING RACEWAY SUITS YOUR NEEDS?

The ducting system is available in yellow or black on request and comes in six sizes, with options for either solid or slotted walls to accommodate fibre exits.

Selecting the appropriate size is crucial to allow for future expansion and additions. Our latest addition, the 600mm x 100mm ducting raceway system, offers maximum capacity, accommodating up to 7,500 2mm patch cords at a 50% fill rate. The raceway system is fully customisable, ensuring it can be tailored to meet the specific needs of your facility.

The capacities listed below are based on half-full duct capacity (50%) and are recommended to ensure no damage occurs to the cords due to crushing. This is not the total number of optical fibre cords that can be accommodated if completely filled.

With over 400 individual components and mounting hardware readily available in local stock and at selected locations globally, our product range is constantly expanding. Proudly made in Australia, we ensure quick order turnaround times – days, not months.

Our future-proof ducting raceway solution is backed by dedicated R&D teams, advanced network-design capabilities, and ongoing product support and training. Prysmian also offers a comprehensive suite of services, complimentary design and layout services, bill of material (BOM) creation, site visits, and expert technical guidance.

Capacities

Based on 2mmØ cord

DUCT SIZE	50MM X 50 2" X 2"	100MM X 50 4" X 2"	100MM X 100 4" X 4"	220MM X 100 8" X 4"	300MM X 100 12" X 4"	600MM X 100 24" X 4"
Straight ducting raceway	280	560	1110	2450	3340	6680
Ducting raceway with ramp-off			670	1470		
Vertical tee - straight through			1110	980		
Vertical tee downspout - drop			1110	110		
Over the top outlet			670			

CONVOLUTED TUBING	SPLIT 20MM DIA.	38MM DIA.	50MM DIA.	75MM DIA.	50MM X 50 SQUARE
Optical cable size/mm	2	2	2	2	2
Tubing capacity	22	125	220	360	280

Note: Calculations are based on half-full duct capacity - 50%

PLANNING AND DESIGNING A LAYOUT AND INSTALLATION

Prysmian is here to assist you in the planning and design of a ducting layout / installation.

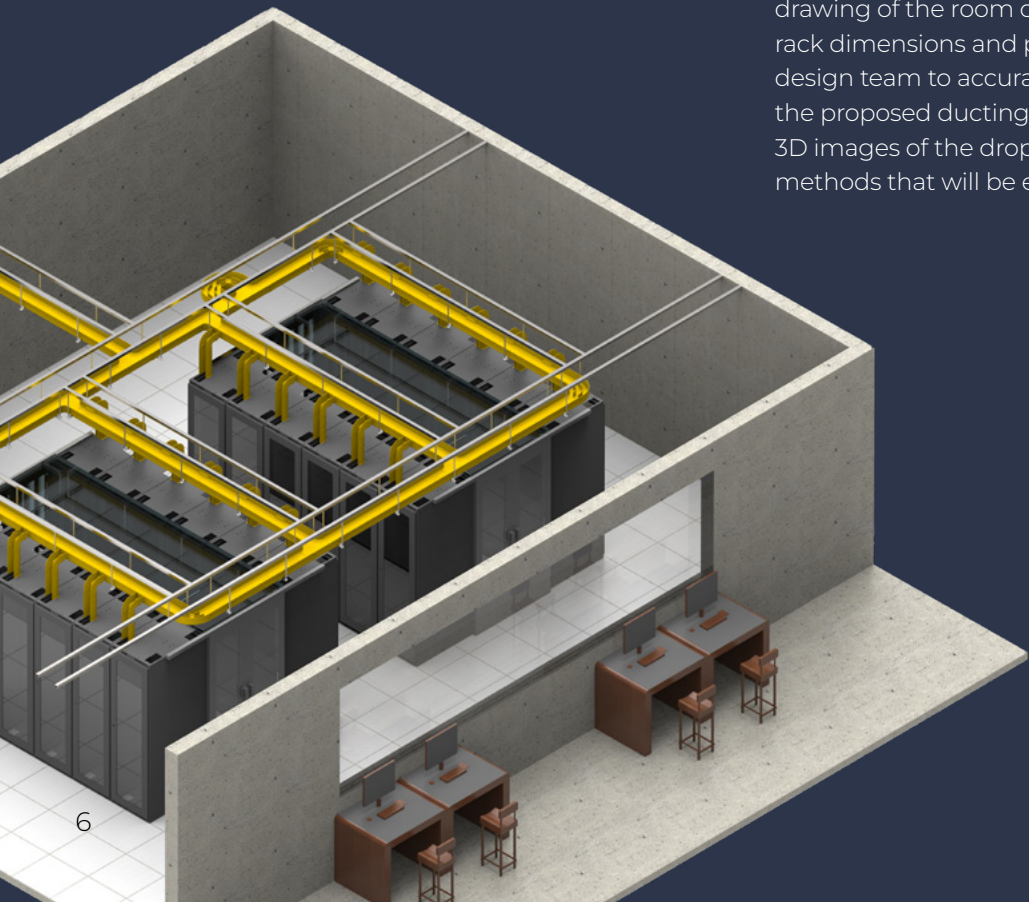
Typically, we are able to produce a detailed layout drawing and complete BOM to complete the task at hand. Below are some examples of how we help you design and build a ducting layout that works for your current operations but has the potential for future expansion.

We encourage you to plan ahead when considering your installation in order to avoid complex retrofitting of ducting to existing 'live' ducting infrastructure. To assist you, we will ask for additional information to ascertain the correct items required, ensuring you achieve your desired results.

Some of these questions are listed below:

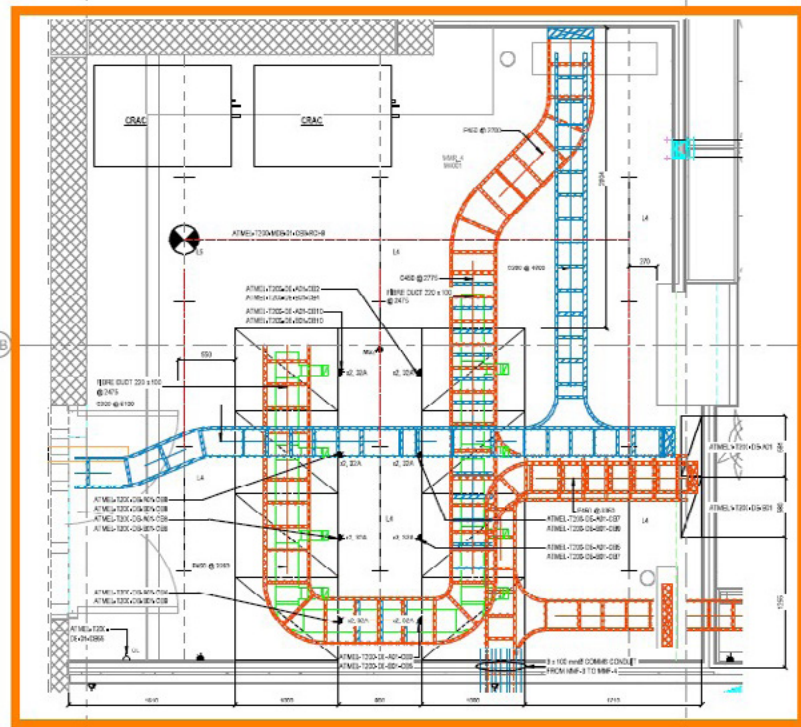
- Duct size? A larger duct may be more suitable for the backbone and to meet future needs.
- Drop-off type? Are tubes required? Do you need to run duct to rack entry points? How many fibres are expected for each drop off?
- Mounting methods? From ladder rack? Steel superstructure? Rack top or underfloor?
- Ducting colour: yellow or black?
- Do you require duct to have covers?
- Have you identified high-traffic areas? Will the location of the HDODF require a larger duct?
- Is fibre storage a requirement within the layout?

The following pages show some basic examples of smaller installations. The customer will usually provide a drawing of the room or office showing, where possible, rack dimensions and positions etc. This allows our design team to accurately redraw the space and show the proposed ducting in position. We can also create 3D images of the drop outs and suggested mounting methods that will be employed.



EXAMPLE 1

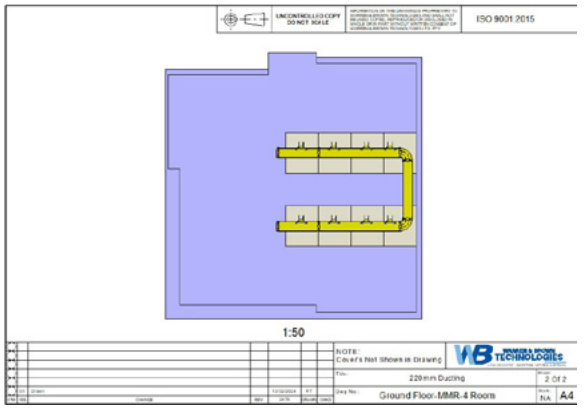
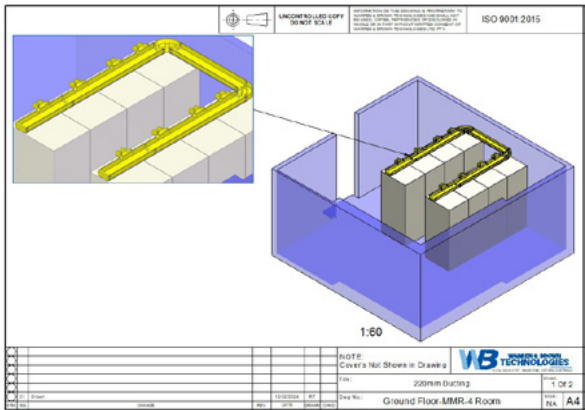
1 Customer-supplied drawing



2 Prysmian will produce an initial drawing / layout for comment

3 Customer provides feedback and any modifications are made as required

4 Prysmian creates a final drawing
Below is an example of what we can produce



5 A bill of materials is produced

Example output shown below

PART DESCRIPTION		PART NO	TOTAL QTY	PRODUCT IMAGE
1	220mm x 100mm Duct and Snap-On Lid	TC1279-21ASNM	18	
2	220mm x 100mm Horizontal Tee and Lid (220mm x 220mm)	TC1279-01A	5	
3	220mm x 100mm Horizontal Elbow and Lid 90°	TC1279-29A	5	
4	220mm x 100mm Vertical Tee and Lid (100mm x 100mm Drop)	TC1279-11A	4	
5	220mm x 100mm Storage Loop and Lid (Inline)	TC1279-207KIT	2	
6	220mm x 100mm Joiner	TC1279-25	40	
7	220mm x 100mm Endcap	TC1279-56	1	
8	Side Drop-Off to 100mm x 100mm Ducting - Raceway	TC1279-111KIT	12	
9	100mm x 100mm Endcap (End Support Bracket)	TC1279-57D	12	
10	100mm x 100mm Duct and Snap-On Lid	TC1279-23ASN	4	
11	100mm x 100mm Joiner	TC1279-27	15	
12	Suspension Bracket Mounting Kit Suits 220mm Ducting	TC1279-106KIT	38	

As you can see, a plan view, 3D view and BOM are produced

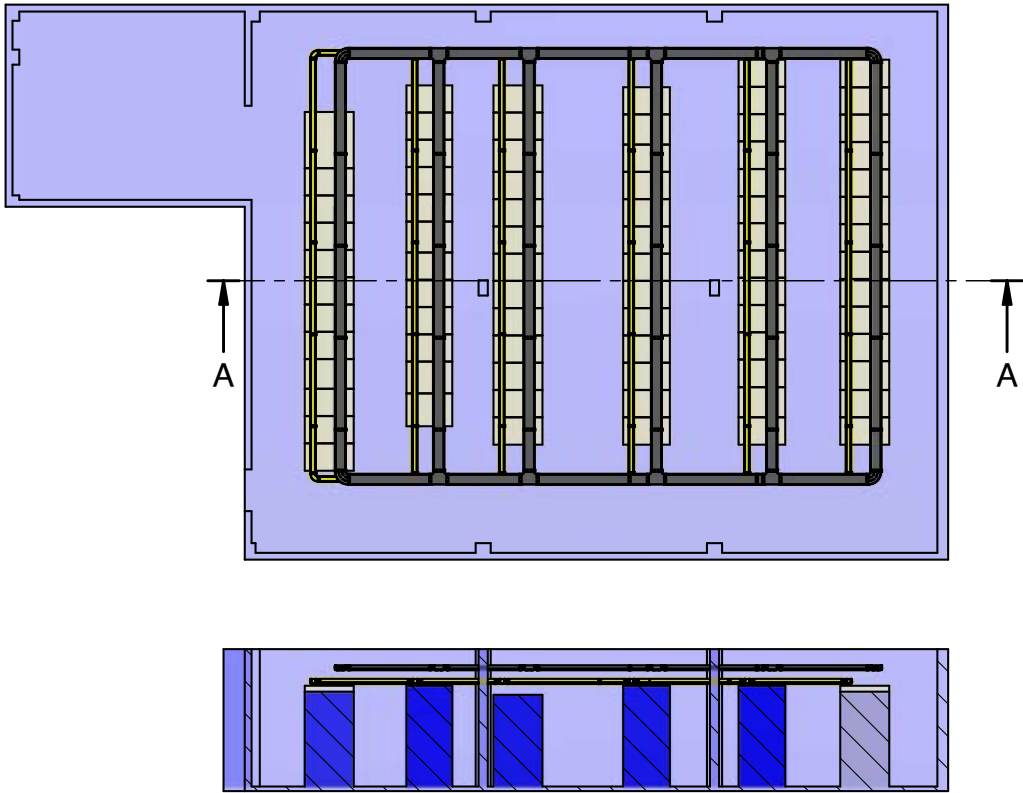
EXAMPLE 2

Prysmian can also assist with the design of much larger projects, producing detailed drawings to ensure the end user understands the complete installation. An example of a larger-scale project is shown below.

1 Customer-supplied drawing



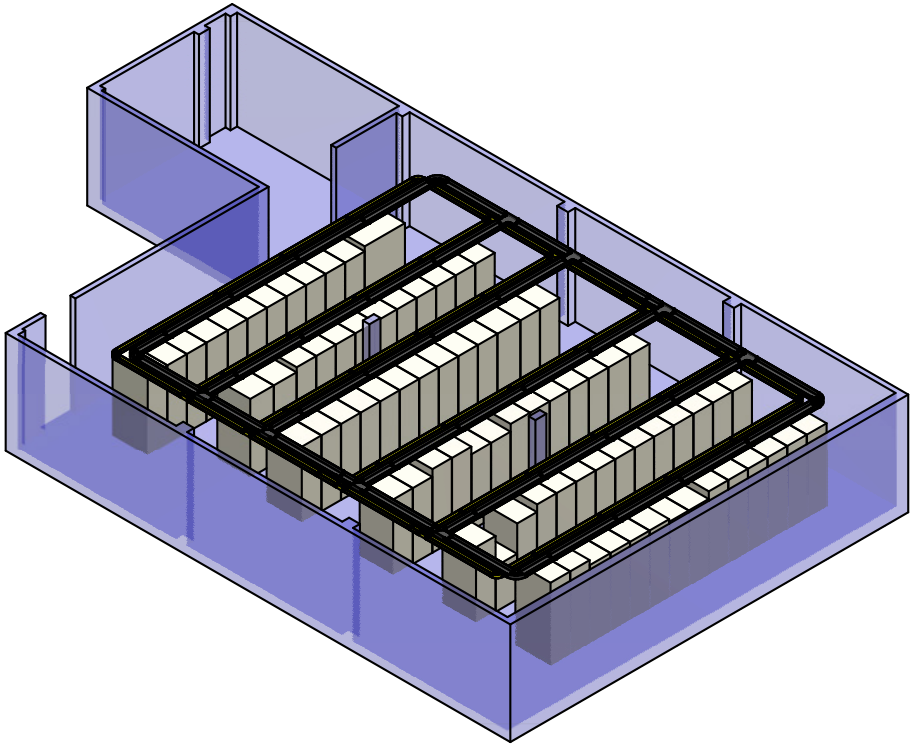
2 Prysmian will produce an initial drawing / layout for comment



3 Customer provides feedback and any modifications are made as required

4 Prysmian creates a final drawing

Below is an example of what we can produce



PART DESCRIPTION		PART NO	TOTAL QTY	PRODUCT IMAGE
1	220mm x 100mm Duct and Snap-On Lid	TC1279-21ASNB	38	
2	220mm x 100mm Horizontal Tee and Lid (220mm x 220mm)	TC1279-01AB	8	
3	220mm x 100mm Horizontal Elbow and Lid 90°	TC1279-29AB	4	
4	220mm x 100mm Joiner	TC1279-25B	65	
5	Express Top Outlet Drop-Off to 100mm x 100mm Ducting - Raceway, Vertical (Slots)	TC1279-307ASLB	77	
6	100mm 88mm Tube Outlet	TC1279-456B	77	
7	Convolutud Tube Flexible, 75mm ID / 88mm OD x (2 metre length)	TC1279-458B	16	
8	Suspension Bracket Mounting Kit Suits 220mm Ducting	TC1279-106KIT	76	
9	100mm x 100mm Duct and Snap-On Lid	TC1279-23ASN	40	
10	100mm x 100mm Horizontal Tee and Lid (100mm x 100mm)	TC1279-03A	8	
11	100mm x 100mm Horizontal Elbow and Lid 90°	TC1279-31A	4	
12	100mm x 100mm Joiner	TC1279-27	65	
13	Express Top Outlet Drop-Off to 50mm x 50mm Ducting - Raceway, Vertical (Slots)	TC1279-531ASL	77	
14	50mm x 50mm Endcap (Tube Outlet for 44mm Tube)	TC1279-127D	77	
15	Convolutud Tube Æ50mm (2 metre length) (YELLOW)	TC1279-53Y	4	
16	Suspension Bracket Mounting Kit Suits 100mm Ducting	TC1279-107KIT	80	

As you can see, a plan view, 3D view and BOM are produced

STRAIGHT DUCT

Prysmian straight-duct lengths are available in six sizes and can come with or without covers. Slotted duct / raceway is available in some sizes for vertical drops or applications inside equipment racks to allow cords to exit through the side of the duct. Some sizes are available with hinged covers (hinges included in pack) or clip-on covers.

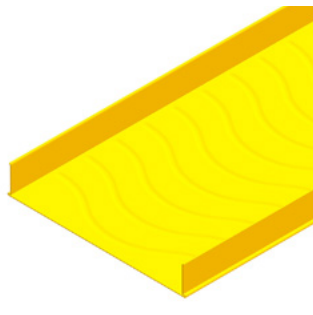
All duct sizes come in 2m (6' 7") lengths, and are slotted at each end for simple snapping together with an appropriate joiner. Most other ducting raceway brands are only available in 6 foot lengths – 10% shorter than Prysmian's Fibre Raceway.



TC1279-23



TC1279-275



TC1279-406



TC1279-21

SIZE (MM) SIZE (INCHES)	50MM X 50 2" X 2"	100MM X 50 4" X 2"	100MM X 100 4" X 4"	220MM X 100 8" X 4"	300MM X 100 12" X 4"	600MM X 100 24" X 4"
Solid duct	TC1279-81	TC1279-223	TC1279-23	TC1279-21	TC1279-275	TC1279-406
Solid duct and cover	TC1279-81XA	TC1279-223ASN	TC1279-23ASN	TC1279-21ASN	TC1279-275A	TC1279-406A
Solid duct and hinged cover	TC1279-81A	TC1279-223A	TC1279-23A	TC1279-21A	N/A	N/A
Slotted duct (side exit)	TC1279-81SL	TC1279-223SL	TC1279-23SL	N/A	N/A	N/A
Slotted duct and cover	TC1279-81SLXA	TC1279-223SLASN	TC1279-23SLASN	N/A	N/A	N/A
Slotted duct and hinged cover	TC1279-81SLA	TC1279-223SLXA	TC1279-23SLA	N/A	N/A	N/A

JOINERS

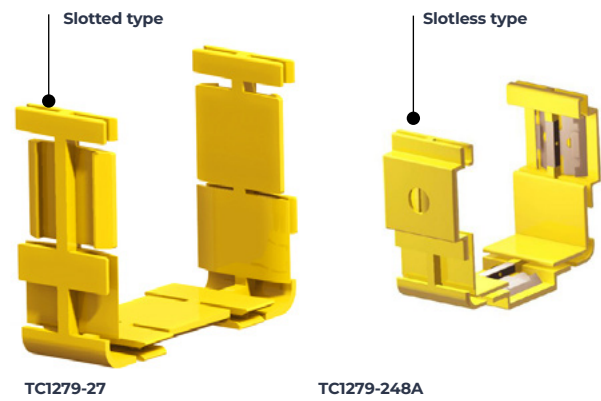
Prysmian Fibre Raceway slotted joiners are used to snap together system components and straight ducting raceway. They snap easily into the slots in the end of each piece to be joined.

Alternatively, “slotless” joiners are available in sizes from 100mm x 50mm upwards and will join the ducting raceway components with or without joining slots.

Note: For a straight-ducting raceway that has been cut to length, new slots need to be made with a suitable size slotting tool when using slotted joiners.

All components (tees, elbows etc) come preslotted to aid speedy installation.

Note: You only need to add slots to duct lengths that have been shortened

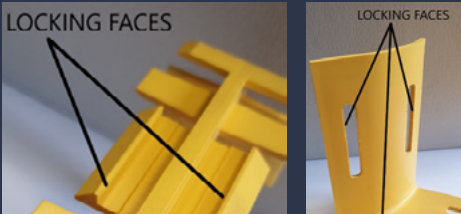


TC1279-27

TC1279-248A

SLOTTED JOINERS EXPLAINED

The Prysmian Joiner is a unique product that works on the simple principle of two faces locking together. The more load that is applied to the matching faces, the more effectively they work. Below are pictures of the joiner and the so the sentence reads: “and the lower section duct item showing the matching positive-locking faces.



Note: a minimum of three positive locks are used on each joiner to ensure positive connection on sidewalls and lower section of duct lengths and components.



The picture to the left shows the joiner in place: note the face of the joiner and duct item are firmly held together giving the positive lock.

As you can see, both faces are square and engaged while the joiner is in place.

It is also worth noting that the joiner is easily removed by inserting a simple flat-blade screwdriver behind the joiner edge and twisting the joiner face-out of the component slot. Joiners can be reused multiple times as neither the joiner or duct components suffer any damage during the installation or removal process.

BENEFITS OF SLOTTED JOINERS

- Strong positive face-to-face locking
- Easy removal with flat-blade screwdriver
- All duct lengths and components are supplied pre slotted, ready to be joined together
- Super-fast installation time
- Re-use joiners multiple times
- Simple easy-to-fit method, just click into place
- Space-saving, slotted joiners are slimline not bulky like slotless or competitor joiners

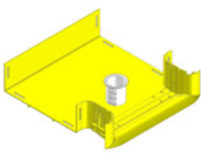
SIZE (MM) SIZE (INCHES)	50MM X 50 2" X 2"	100MM X 50 4" X 2"	100MM X 100 4" X 4"	220MM X 100 8" X 4"	300MM X 100 12" X 4"	600MM X 100 24" X 4"
Joiners (require slots)	TC1279-73	TC1279-226	TC1279-27	TC1279-25	TC1279-320	N/A
Slotless joiners	N/A	TC1279-459A	TC1279-248A	TC1279-250A	TC1279-287A	TC1279-410A

TEES, ELBOWS AND CROSSES

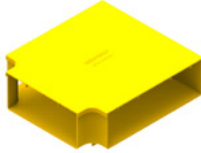
Horizontal tees

Prysmian Fibre Raceway horizontal tees may be used to branch off the main route or provide a method of breaking into horizontal duct. They are available with or without covers.

Specialised tee piece



TC1279-279IT



TC1279-316A



TC1279-01A

Note: Horizontal tees can also be used as a means of drop off.

SIZE (MM) SIZE (INCHES)	50MM X 50 2" X 2"	100MM X 50 4" X 2"	100MM X 100 4" X 4"	220MM X 100 8" X 4"	300MM X 100 12" X 4"	600MM X 100 24" X 4"
Horizontal tee	TC1279-75	TC1279-224	TC1279-03	TC1279-01	TC1279-279	TC1279-412
Horizontal tee and cover	TC1279-75A	TC1279-224A	TC1279-03A	TC1279-01A	TC1279-279A	TC1279-412A
300mm - 220mm duct horizontal tee and cover	TC1279-316A	220mm - 100mm duct horizontal tee and cover			TC1279-09A	N/A
300mm - 100mm duct horizontal tee and cover	TC1279-398A	100mm - 220mm duct horizontal tee and cover			TC1279-393A	N/A
300mm - 100mm specialized tee with separator/island	TC1279-279IT					

Horizontal elbows

Prysmian Fibre Raceway horizontal elbows are used to change the direction of horizontal routes. They are available with or without covers.



TC1279-269

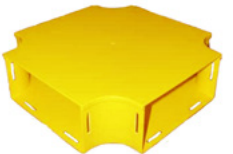


TC1279-29A

SIZE (MM) SIZE (INCHES)	50MM X 50 2" X 2"	100MM X 50 4" X 2"	100MM X 100 4" X 4"	220MM X 100 8" X 4"	300MM X 100 12" X 4"	600MM X 100 24" X 4"
30° Elbow	TC1279-77-30	N/A	TC1279-47	TC1279-45	N/A	N/A
30° Elbow and cover	TC1279-77-30A	N/A	TC1279-47A	TC1279-45A	N/A	N/A
45° Elbow	TC1279-77-45	N/A	TC1279-31-45	TC1279-29-45	TC1279-304	TC1279-414
45° Elbow and cover	TC1279-77-45A	N/A	TC1279-31-45A	TC1279-29-45A	TC1279-304A	TC1279-414A
90° Elbow	TC1279-77	TC1279-269	TC1279-31	TC1279-29	TC1279-387	TC1279-411KIT
90° Elbow and cover	TC1279-77A	TC1279-269A	TC1279-31A	TC1279-29A	TC1279-387A	TC1279-411A

Horizontal crosses

Prysmian Fibre Raceway horizontal crosses can be used to provide a cross intersection in straight duct.



TC1279-61A



TC1279-300A

Reduction crosses join horizontal duct of different sizes.

SIZE (MM) SIZE (INCHES)	50MM X 50 2" X 2"	100MM X 50 4" X 2"	100MM X 100 4" X 4"	220MM X 100 8" X 4"	300MM X 100 12" X 4"	600MM X 100 24" X 4"
Horizontal cross	TC1279-139	TC1279-234	TC1279-71	TC1279-61	TC1279-300	TC1279-416
Horizontal cross and cover	TC1279-139A	TC1279-234A	TC1279-71A	TC1279-61A	TC1279-300A	TC1279-416A
Reduction cross	220mm x 100 to 100mm x 100	TC1279-65	220mm x 100 to 300mm x 100	TC1279-331		
Reduction cross and cover	220mm x 100 to 100mm x 100	TC1279-65A	220mm x 100 to 300mm x 100	TC1279-331A		
Reduction cross	300mm x 100 to 100mm x 100	TC1279-396				
Reduction cross and cover	300mm x 100 to 100mm x 100	TC1279-396A				

Handy hint

You can use breakouts in place of crosses to achieve the same result (see page 15)

Vertical tees (downspouts) - intrasuite assemblies

Prysmian Fibre Raceway vertical tees can be used to drop cables vertically from horizontal routes into frames or cabinets. Retrofit tees provide open access and are used where cables are already in place. They are available with or without covers.

Note: Can also be used as drop-offs.

SIZE (MM) SIZE (INCHES)	50MM X 50 2" X 2"	100MM X 50 4" X 2"	100MM X 100 4" X 4"	220MM X 100 8" X 4"	300MM X 100 12" X 4"	600MM X 100 24" X 4"
50mm x 50mm drop	TC1279-145	N/A	N/A	N/A	N/A	N/A
50mm x 50mm drop and cover	TC1279-145A	N/A	N/A	N/A	N/A	N/A
50mm x 50mm drop retro	TC1279-145R	N/A	N/A	N/A	N/A	N/A
100mm x 50mm drop	N/A	TC1279-228	N/A	N/A	N/A	N/A
100mm x 50mm drop and cover	N/A	TC1279-228A	N/A	N/A	N/A	N/A
100mm x 100mm drop	N/A	N/A	TC1279-63	TC1279-11	N/A	N/A
100mm x 100mm drop and cover	N/A	N/A	TC1279-63A	TC1279-11A	N/A	N/A
100mm x 100mm drop retro	N/A	N/A	TC1279-63R	TC1279-11R	N/A	N/A
220mm x 100mm drop	N/A	N/A	N/A	N/A	TC1279-277	N/A
220mm x 100mm drop and cover	N/A	N/A	N/A	TC1279-329A	TC1279-277A	N/A

Vertical elbows

Prysmian Fibre Raceway vertical elbows are used to connect horizontal routes at different heights, or to allow the fibre path to be raised or lowered to avoid obstacles. Retrofit versions are used where there is existing fibre. They are available with or without covers.

SIZE (MM) SIZE (INCHES)	50MM X 50 2" X 2"	100MM X 50 4" X 2"	100MM X 100 4" X 4"	220MM X 100 8" X 4"	300MM X 100 12" X 4"	600MM X 100 24" X 4"
30° down	TC1279-87-30	N/A	TC1279-111-30	TC1279-123-30	N/A	N/A
30° down and cover	TC1279-87-30A	N/A	TC1279-111-30A	TC1279-123-30A	N/A	N/A
30° down retrofit	N/A	N/A	TC1279-111-30R	TC1279-123-30R	N/A	N/A
30° up	N/A	N/A	TC1279-113-30	TC1279-125-30	N/A	N/A
30° up and cover	N/A	N/A	TC1279-113-30A	TC1279-125-30A	N/A	N/A
30° up retrofit	N/A	N/A	TC1279-113-30R	TC1279-125-30R	N/A	N/A
45° down	TC1279-87-45	N/A	TC1279-111-45	TC1279-123-45	TC1279-285	N/A
45° down and cover	TC1279-87-45A	N/A	TC1279-111-45A	TC1279-123-45A	TC1279-285A	N/A
45° down retrofit	N/A	N/A	TC1279-111-45R	TC1279-123-45R	N/A	N/A
45° up	TC1279-143-45	N/A	TC1279-113-45	TC1279-125-45	TC1279-283	N/A
45° up and cover	TC1279-143-45A	N/A	TC1279-113-45A	TC1279-125-45A	TC1279-283A	TC1279-437A
45° up retrofit	TC1279-143-45R	N/A	TC1279-113-45R	TC1279-125-45R	N/A	N/A
90° down	TC1279-87	TC1279-236	TC1279-111	TC1279-123	TC1279-193	TC1279-425KIT
90° down and cover	TC1279-87A	TC1279-236A	TC1279-111A	TC1279-123A	TC1279-193A	TC1279-425A
90° down retrofit	TC1279-87R	TC1279-236R	TC1279-111R	TC1279-123R	N/A	N/A
90° up	TC1279-143	TC1279-246	TC1279-113	TC1279-125	TC1279-298A	TC1279-427KIT
90° up and cover	TC1279-143A	TC1279-246A	TC1279-113A	TC1279-125A	TC1279-298KIT	TC1279-427A
90° up retrofit	TC1279-143R	TC1279-246R	TC1279-113R	TC1279-125R	N/A	N/A
90° up and down enclosed	N/A	N/A	TC1279-39A	TC1279-37A	N/A	N/A

BREAKOUTS

Trumpet outlet

The breakout assembly is used to provide a safe exit for optical fibre cord/s to equipment at any point in a ducting length. It is normally used to provide a breakout in existing duct systems, and clips straight into a cut-out in the duct wall. When used as described, the breakout assembly provides a curved outlet; to which any standard part can be fitted using a joiner. A lid is supplied.

Note: Tools for producing cut outs are shown on pages 34-35

OUTLET TRUMPET

TC1279-93A 50mm x 50mm
TC1279-218A 100mm x 100mm
TC1279-330A 220mm x 100mm
TC1279-379A 300mm x 100mm



Handy hint

You can reverse this breakout to use it as a trumpet if required

High-capacity duct outlets

These duct outlet kits provide the ideal solution for high-capacity optical fibre cords. Duct outlets can be placed anywhere along the duct and minimal time and effort is required to install these outlet components. This solution allows for quick installation, as fewer cuts are required and it is stronger as the ribs of the duct are not cut.

- Simply clips onto the top of a straight duct length
- Straight duct components ordered separately



TC1279-452A

High capacity outlet, 100mm x 100mm (4" x 4") 90°
– Provides a 90° down bend (and breakout facility) at any point in a 100mm, 220mm or 300mm duct system
– Can accept any standard 100mm x 100mm duct item using a joiner

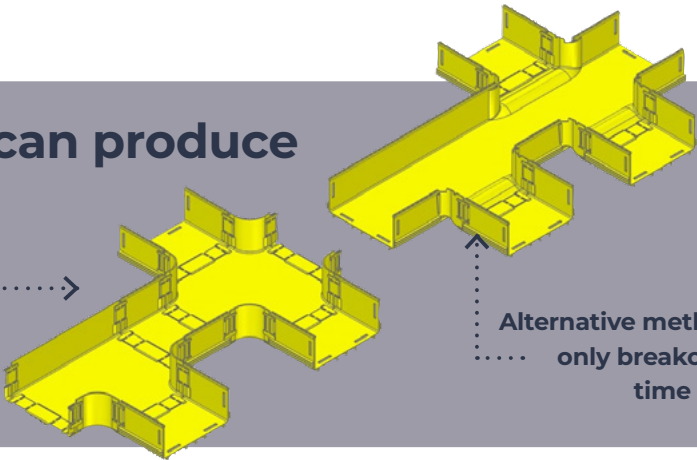
TC1279-454A

High capacity outlet, 220mm x 100mm (8" x 4") 90° Provides a 90° down bend (and breakout facility) at any point in a 100mm, 220mm, 300mm or 600mm duct system
– Can accept any standard 220mm x 100mm duct item using a joiner
– Use template 483A for cut out

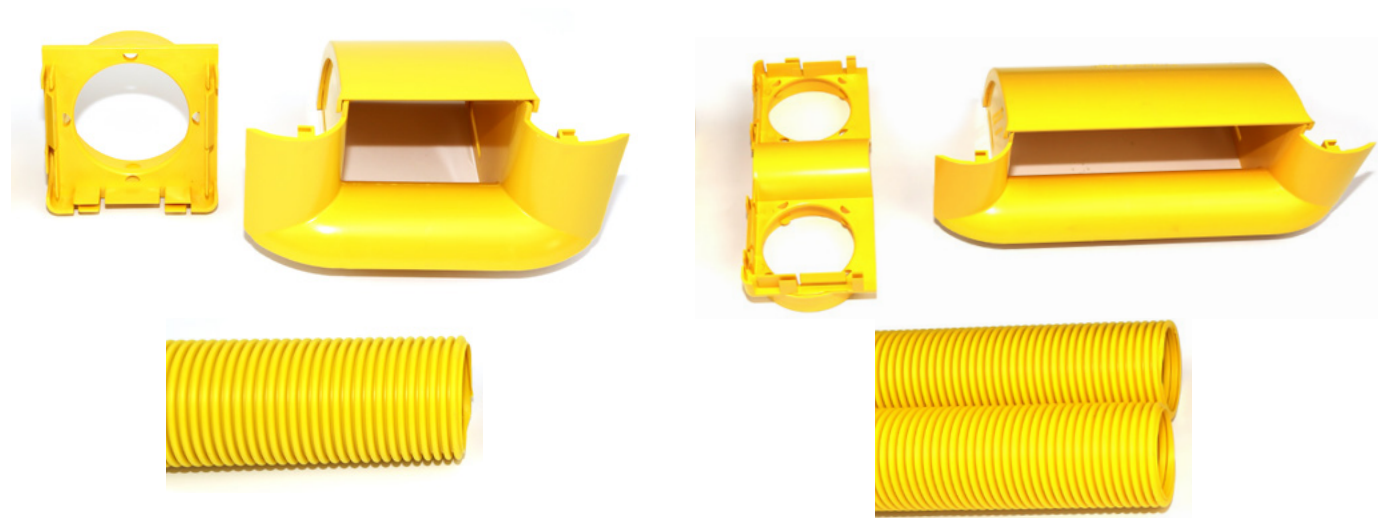


Unique breakouts can produce crosses or tees

Traditional method using a cross or tee



Alternative method using only breakouts saves time and costs



TC1279-452KIT

- High-capacity outlet kit, single, 100mm x 100mm (4" x 4") 90°
- Provides a 90° down bend tube in a 100mm, 220mm or 300mm duct system
 - The 75mm ID/88 mm OD tube can carry either: 360 x 2mm cords; 210 x 2.4mm cords; or 160 x 3mm dia cords maximum
 - Use template 483A for cutout

Kit includes:

- 1x TC1279-452A
- 1 x 2m long convoluted tube TC1279-458
- 1 x TC1279-456 convoluted tube outlet

TC1279-454KIT

- High-capacity outlet kit, dual, 220mm x 100mm (8" x 4") 90°
- Provides a 90° down bend for two large-size convoluted tubes in a 100mm, 220mm or 300mm duct system
 - Each 75mm ID tube can carry up to 360 x 2mm cords
 - Use template 483A for cut out

Kit includes:

- 1x TC1279-454A
- 2 x 2m long convoluted tubes TC1279-458
- 1 x TC1279-457 dual convoluted tube outlet

Side drop-off kits - 100mm x 100mm exit

100mm x 100mm duct drop-off solutions are suitable for 100mm x 50mm, 100mm x 100mm, 220mm x 100mm and 300mm x 100mm straight duct lengths.

- Use tool TC1279-231 to make cut-out in side of duct or template TC1279-483A)
- Straight duct components ordered separately



TC1279-111KIT

- Side drop-off to 100mm x 100mm ducting raceway
- This drop can fit between 500-600 x 2mm cables
 - Use tool TC1279-231 to make cut-out in side of duct



TC1279-218A

- Side drop-off (outlet only) to 100mm x 100mm ducting raceway
- This outlet can fit between 500-600 x 2mm cables
 - Use tool TC1279-483A



TC1279-483A

- Cut-out jig, for drop-offs and breakout guides - suitable for all ducts from 50mm to 600mm

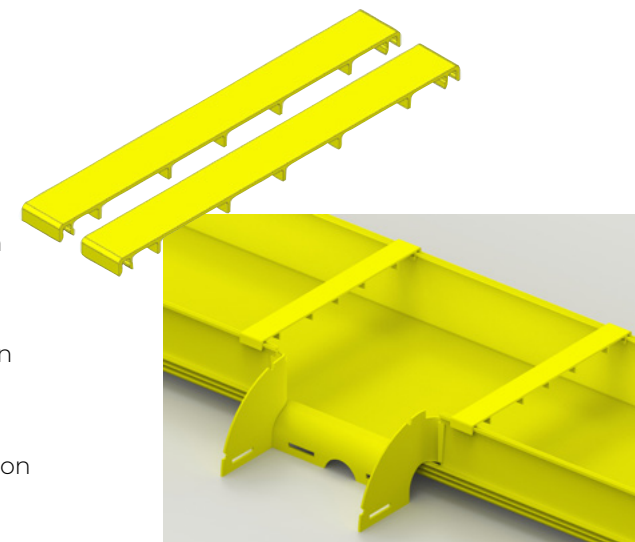


RETAINER CLIPS

These clips provide additional support near the express drops where covers have not been used.

Suits:

- 100mm cut to 35mm long, TC1279-24SKIT, 100mm Snap-on lid cut to 35mm kit (10 Pairs) or TC1279-24SKITA, 100mm Snap-on lid cut to 35mm kit (20 Pairs)
- 220mm cut to 35mm long , TC1279-22SKIT, 220mm Snap-on lid cut to 35mm kit (10 Pairs) or TC1279-22SKITA, 220mm Snap-on lid cut to 35mm kit (20 Pairs)
- 300mm cut to 35mm long , TC1279-276SKIT, 300mm Snap-on lid cut to 35mm kit (10 Pairs) or TC1279-276SKITA, 300mm Snap-on lid cut to 35mm kit (20 Pairs)



EXPRESS OUTLETS

Express top outlet (clip on) drop-off kits 100 x 100mm exit

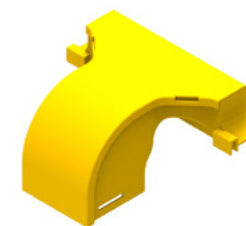
100mm x 100mm express top outlet drop-off solutions are suitable for 100mm x 50mm, 100mm x 100mm, 220mm x 100mm, 300mm x 100mm and 600mm x 100mm straight duct lengths. These style outlets simply clip onto the top of the ducting raceway, providing an express outlet (drop) along a length of ducting. No slotting, bolting or cutting is required for installing these components onto the straight duct length.

- Simply clips onto the top of a straight duct length
- Straight duct components ordered separately



TC1279-531A

- Express top outlet drop-off to 50mm x 50mm ducting raceway, horizontal
- This drop can fit between 300-400 x 2mm cables
 - Fits on any duct 100mm x 50mm or larger



TC1279-307A

- Express top outlet drop-off to 100mm x 100mm ducting raceway, vertical
- This drop can fit between 300-400 x 2mm cables
 - Fits on any duct 100mm x 50mm or larger

Additional outlet lids

For each outlet in the range, special lids are available that close the space between the express outlets and the duct.

TC1279-290B

Duct lid for top outlet assembly 100mm



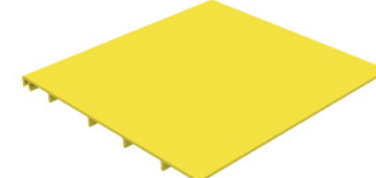
TC1279-290C

Duct lid for top outlet assembly 220mm



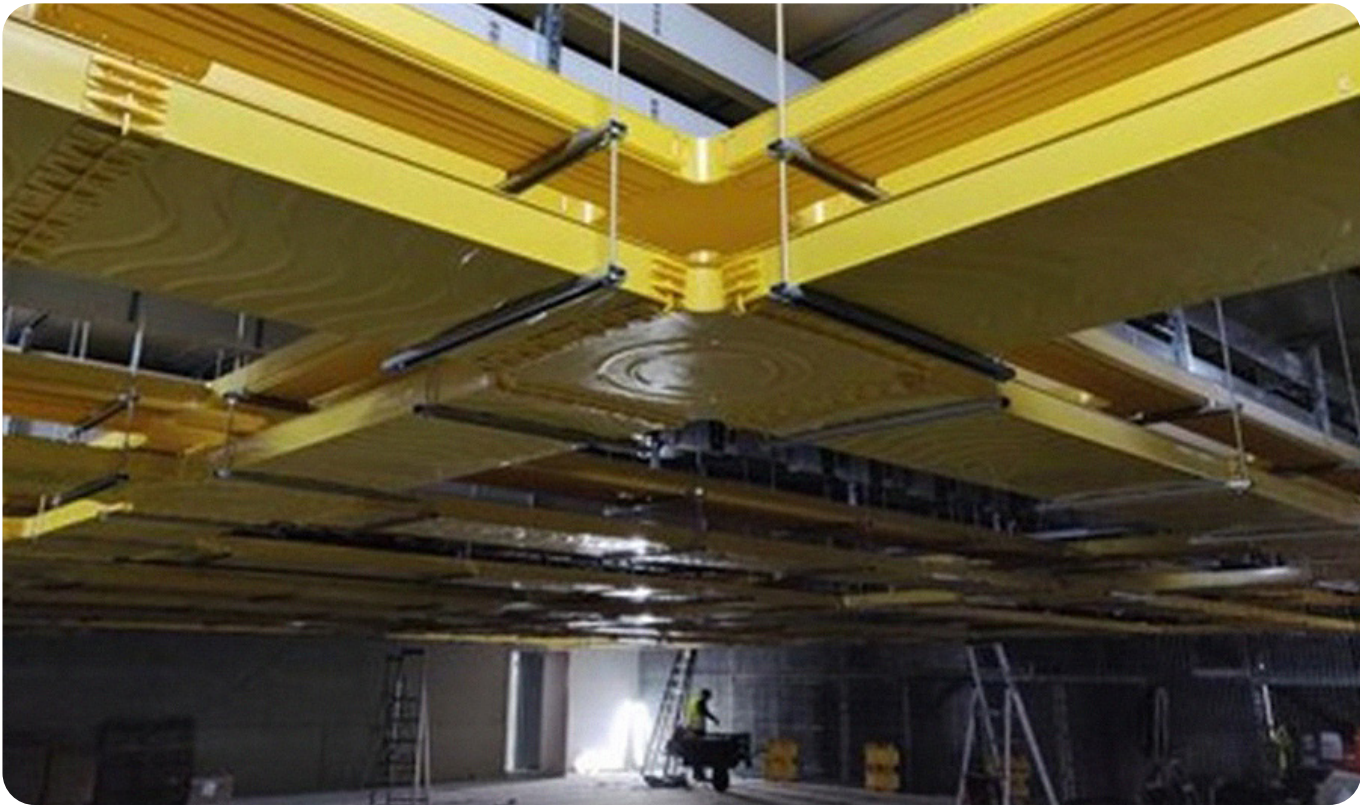
TC1279-290 D

Duct lid for top outlet assembly 300mm



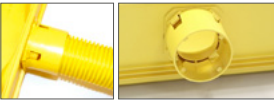
DROP-OFF SOLUTIONS

These components provide different methods of allowing fibres to enter or leave the fibre optic ducting raceway. They can be purchased as kits or as individual items.



Side spill out kit

This drop-off assembly can be installed anywhere along the length of a 100mm high duct to allow up to 80 x 2mm optical fibre cords to leave the duct horizontally or vertically (if installed on the floor of the straight duct). Use cut-out tool / hole saw TC1279-604KIT with a drill to make a cut into the ducting.



TC1279-602A
Duct side spill out, straight outlet to convoluted tubing



TC1279-609A
Duct side spill out, 90°, up / down / left / right to convoluted tubing

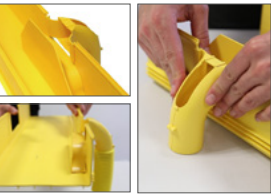


Note: Convoluted tibe TC1279-53Y or TC1279-53B suits these drop offs (See page 24)

Side drop-off kits - 50mm x 50mm exit

50mm (2") duct drop-off solutions are suitable for 50mm x 50mm, 100mm x 50mm, 100mm x 100mm, 220mm x 100mm, 300mm x 100mm and 600mm x 100mm straight duct lengths.

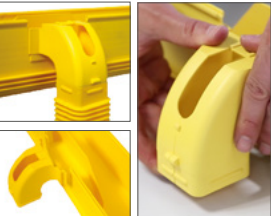
- Use tool TC1279-483A to make cut-out in side of duct
- Round convoluted tube, square convoluted tube and straight duct components ordered separately



TC1279-41KIT
50mm (2") side drop-off (outlet) to 50mm dia round convoluted tube
– Can fit approx. 80 x 2mm cables
– Also includes duct ramp



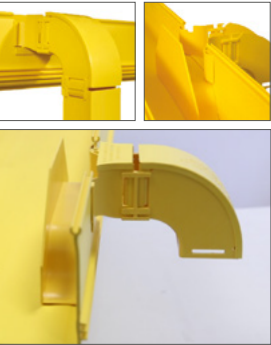
TC1279-41A
50mm (2") side drop-off (outlet only)
– Can fit approx. 80 x 2mm cables



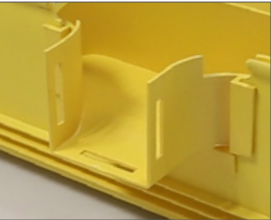
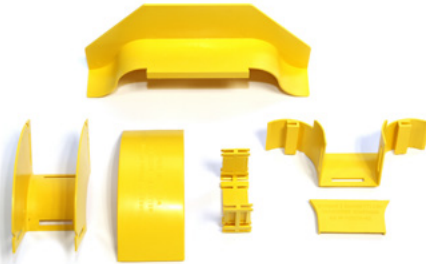
TC1279-89KIT
Side drop-off to 50mm (2") square convoluted tube (TC1279 - 85YEL)
– Can fit approx. 100-150 x 2mm cables
– Also includes duct ramp



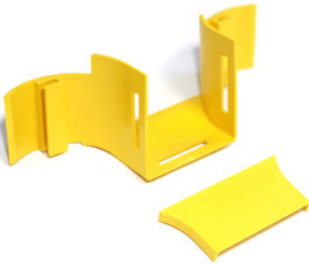
TC1279-89A
Side drop-off (outlet) to 50mm square only
– Can fit approx. 100-150 x 2mm cables
– Fits square tube TC1279 - 85YEL



TC1279-93KIT
Side drop-off kit to 50mm ducting raceway
– Can fit between 100-150 x 2mm cables
– Full kit for vertical drop (includes duct outlet, duct ramp, joiner and vertical elbow)
– Straight duct lengths ordered separately



TC1279-93A
Side breakout to 50mm ducting raceway
– Can fit between 100-150 x 2mm cables
– Straight duct lengths, duct ramp, joiner and elbow ordered separately



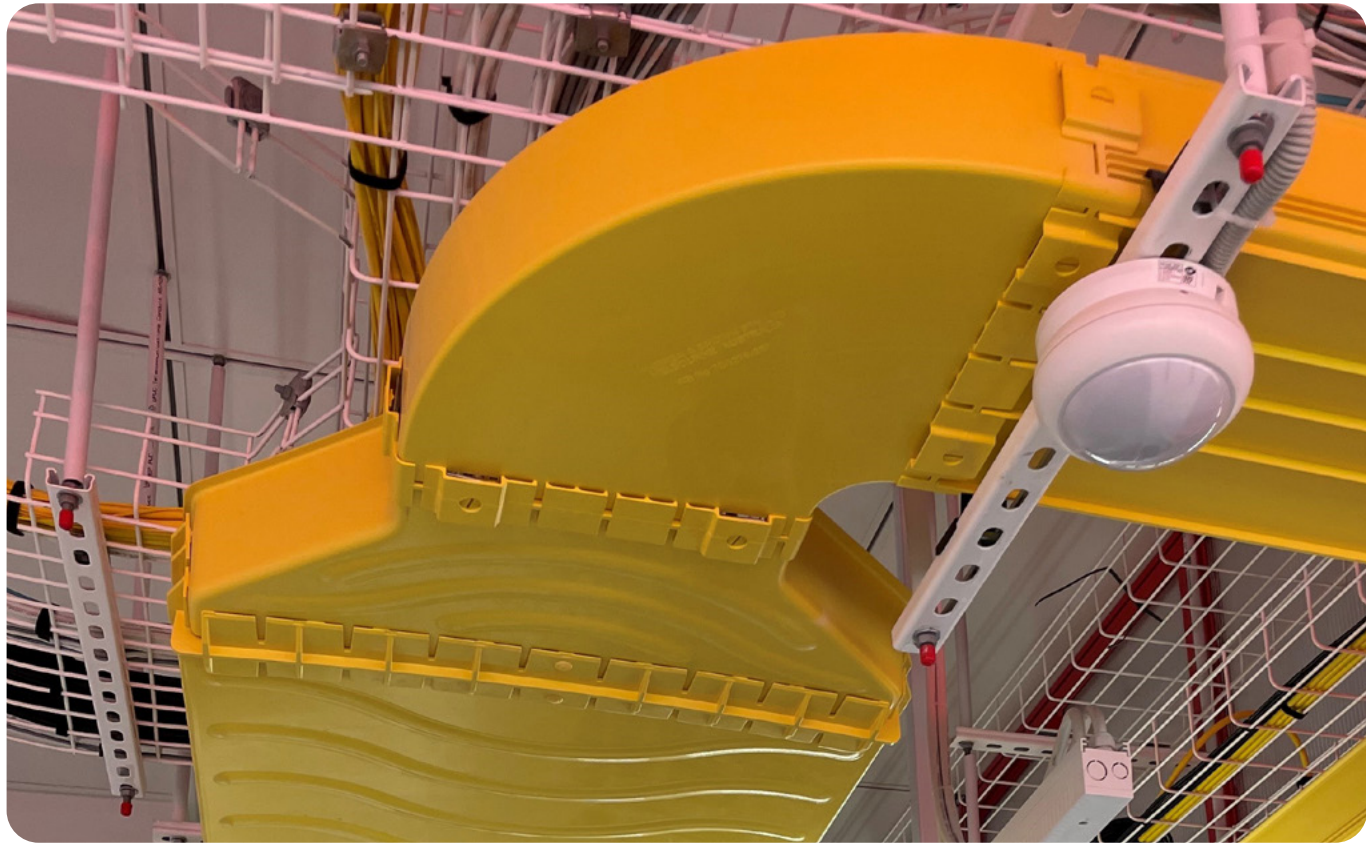
REDUCERS

Prysmian Fibre Raceway reducers allow different size ducts to be joined together. They are available with or without covers.



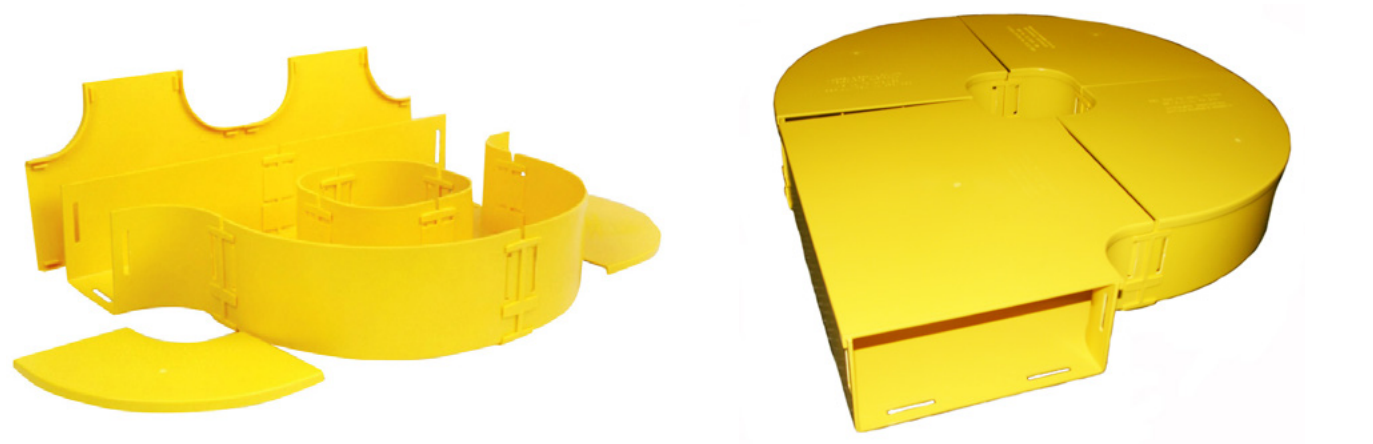
TC1279-07A

MAIN SIZE (MM) REDUCTION SIZE (MM)	100MM X 50 50MM X 50	100MM X 100 50MM X 50	100MM X 100 100MM X 50	220MM X 100 100MM X 100	300MM X 100 220MM X 100	600MM X 100 300MM X 100
Reducer	TC1279-238	TC1279-91	TC1279-240	N/A	TC1279-281	TC1279-408
Reducer and cover	TC1279-238A	TC1279-91A	TC1279-240A	N/A	TC1279-281A	TC1279-408A
Reducer right-hand	N/A	N/A	N/A	TC1279-05	N/A	N/A
Reducer right-hand and cover	N/A	N/A	N/A	TC1279-05A	N/A	N/A
Reducer left-hand	N/A	N/A	N/A	TC1279-07	N/A	N/A
Reducer left-hand and cover	N/A	N/A	N/A	TC1279-07A	N/A	N/A



FIBRE-STORAGE LOOPS

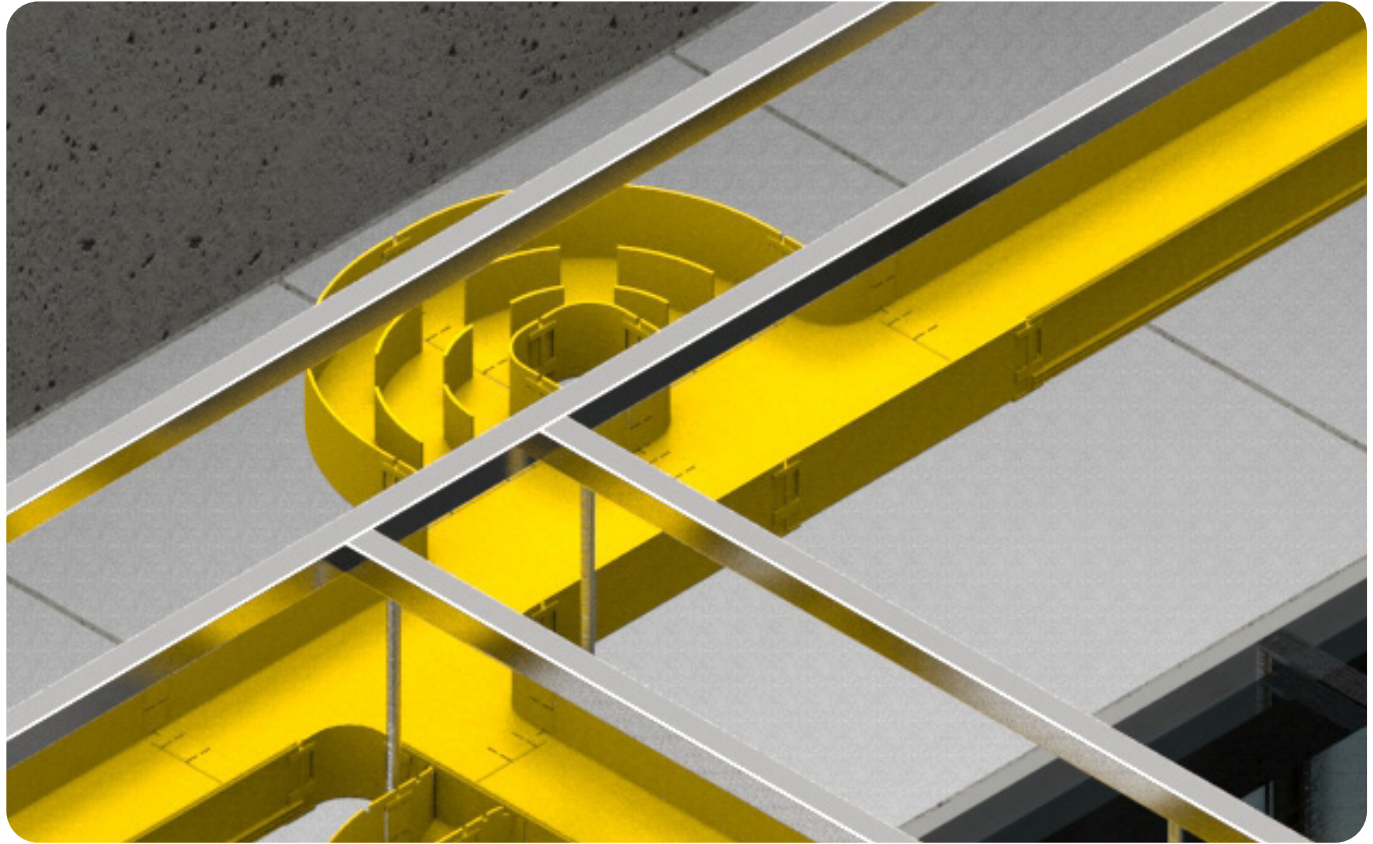
Prysmian Fibre Raceway fibre-storage loops are used to safely store excess optical fibre cable lengths and can be placed in any horizontal route or inside cabinets. They are available in inline or offset versions.



TC1279-208KIT

TC1279-191KIT

SIZE (MM) SIZE (INCHES)	50MM X 50 2" X 2"	100MM X 50 4" X 2"	100MM X 100 4" X 4"	220MM X 100 8" X 4"	300MM X 100 12" X 4"
Inline	TC1279-209KIT	TC1279-186KIT	TC1279-208KIT	TC1279-207KIT	TC1279-485KIT
Offset	TC1279-178KIT	TC1279-195KIT	TC1279-192KIT	TC1279-191KIT	TC1279-315KIT



END CAPS

Prysmian Fibre Raceway end caps are used to close off the end of a horizontal or vertical route of duct. However, some end caps can be used as drop-out options incorporating various tube diameters to feed the fibre to racks. Some are sealed, others have knock outs or spigots for convoluted tubing or fibre feedout.

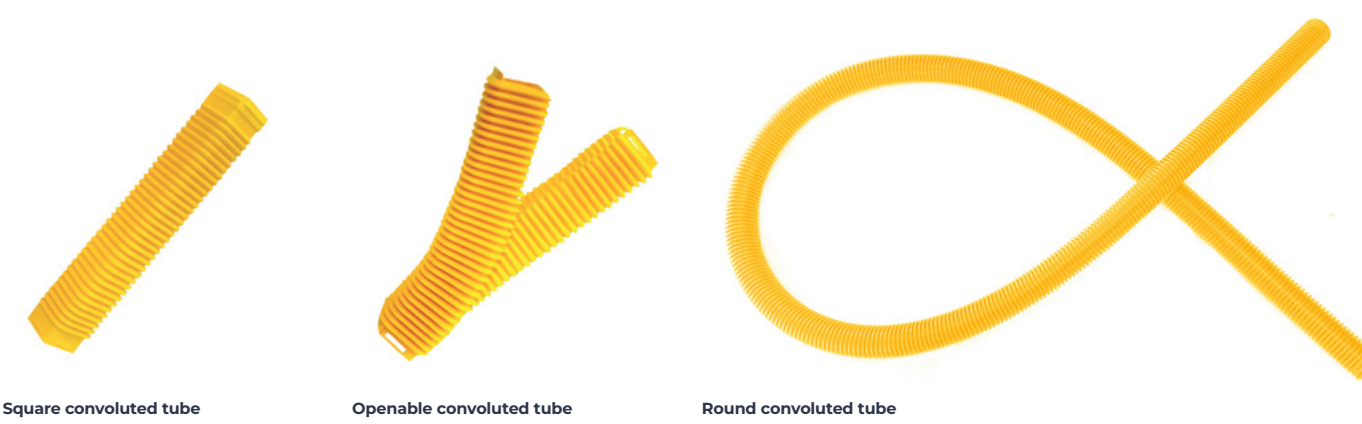


SIZE (MM) SIZE (INCHES)	50MM X 50 2" X 2"	100MM X 50 4" X 2"	100MM X 100 4" X 4"	220MM X 100 8" X 4"	300MM X 100 12" X 4"	600MM X 100 24" X 4"
Sealed	N/A	TC1279-227	TC1279-57	TC1279-56	N/A	N/A
Sealed (for use with slotless joiners)	N/A	N/A	TC1279-251	TC1279-252	TC1279-288	TC1279-435
2 x 20mm dia knockouts	TC1279-127	N/A	N/A	N/A	N/A	N/A
1 x 38mm dia knockout	TC1279-127B	N/A	N/A	N/A	N/A	N/A
1 x 38mm cutout	TC1279-127C	N/A	N/A	N/A	N/A	N/A
Tube outlet for 50mm tube	TC1279-127D	N/A	N/A	N/A	N/A	N/A
2 x 32mm dia knockouts	N/A	N/A	TC1279-57B	N/A	N/A	N/A
2 x 46mm dia holes	N/A	N/A	TC1279-57C	N/A	N/A	N/A
End-support bracket	TC1279-127F	N/A	TC1279-57D	N/A	N/A	N/A
88mm tube outlet	N/A	N/A	TC1279-456	N/A	N/A	N/A
Dual 88mm tube outlets	N/A	N/A	N/A	TC1279-457	N/A	N/A

TUBING

Prysmian Fibre Raceway tubing is used for feeding entering or exiting optical fibres from the ducting raceway into equipment racks.

They are convoluted or ribbed to allow adjustment if drops cannot be positioned exactly over or under equipment. Some are available with removable covers, or split for ease of cable installation.

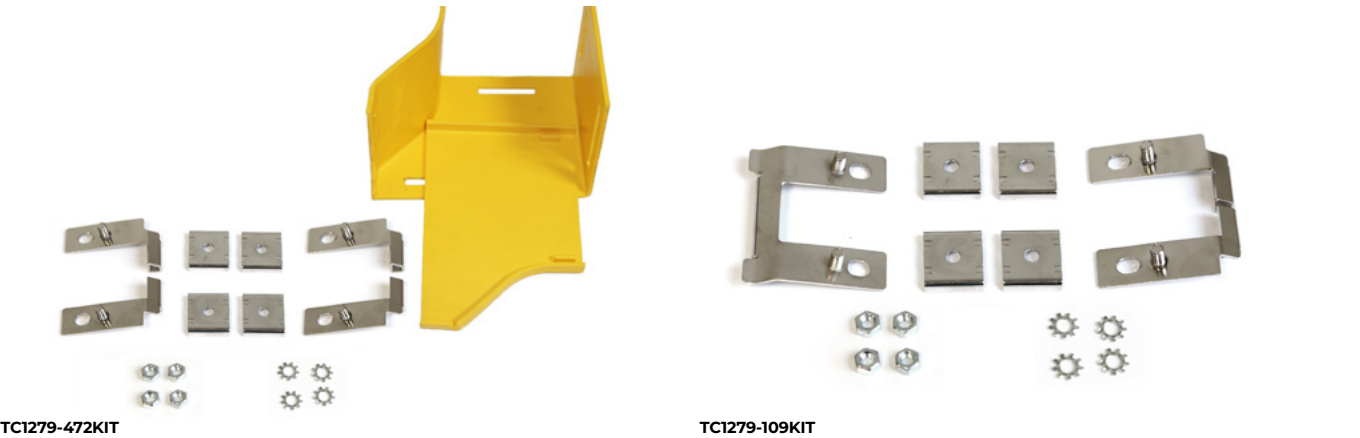


DESCRIPTION	YELLOW	BLACK
Convoluted tube 50mm dia (1 metre length)	TC1279-26Y	TC1279-26
Convoluted tube 50mm dia (2 metre length)	TC1279-53Y	TC1279-53
Convoluted tube 25mm dia (2 metre length)	N/A	TC1279-54 *
Convoluted tube 38mm dia (2 metre length)	N/A	TC1279-68
Convoluted tube 50mm square (350mm length)	TC1279-85YEL	TC1279-85BLK
Openable convoluted tube with cover 50mm square (350mm length)	TC1279-85KIT	N/A
Convoluted tube 30mm square (350mm length)	TC1279-88	N/A
Convoluted tube split 20mm dia (2 metre length)	N/A	TC1279-100 *
Convoluted tube split with cover 50mm dia (1 metre length)	N/A	TC1279-350
Convoluted tube, flexible, 75mm ID/88mm OD x 2 metres long	TC1279-458	N/A
Convoluted tube, flexible, 75mm ID/88mm OD x 1 metres long	TC1279-458-1	N/A
Convoluted tube, flexible, 65mm ID/83mm OD x 2 metres long	TC1279-471	N/A
Convoluted tube, flexible, 65mm ID/83mm OD x 1 metres long	TC1279-471-1	N/A
Convoluted tube, flexible, 75mm ID/88mm OD x 1.15 metres long	TC1279-479	N/A
Convoluted tube 63mm ID/ 65mm OD x 1.1 metres, c/w two joiners to connect to 75mm ID/88mm OD convoluted tube	TC1279-480A	N/A
Convoluted tubing Adaptor kit, 75mm ID/ 88mm OD to 44mm ID/ 50mm OD tubing	TC1279-494KIT	N/A

*Grey

ADAPTORS


Prysmian Fibre Raceway adaptors are used to connect parts from other products to the ducting raceway. Most other ducting brands can be slotted with a Prysmian slotting tool to suit one of our slotted joiners.



DESCRIPTION	PART NO.
Adaptor kit 100mm x 100 Fibre Raceway to Commscope 4"	TC1279-109KIT
Adaptor kit left-hand Fibre Raceway 220mm x 100mm to Commscope 6"	TC1279-149KIT
Adaptor kit right-hand Fibre Raceway 220mm x 100mm to Commscope 6"	TC1279-150KIT
Adaptor kit 100mm vertical Fibre Raceway to Commscope 4",6" or 12"	TC1279-307SLKIT
Adaptor kit Fibre Raceway 300mm x 10mm to Commscope 12"	TC1279-327KIT
Adaptor kit right-hand Fibre Raceway 100mm x 100mm to Commscope 6"	TC1279-472KIT
Adaptor kit left-hand Fibre Raceway 100mm x 100mm to Commscope 6"	TC1279-473KIT
Adaptor kit right-hand Fibre Raceway 220mm x 100mm to Panduit 6"	TC1279-486KIT
Adaptor kit left-hand Fibre Raceway 220mm x 100mm to Panduit 6"	TC1279-487KIT
Adaptor kit Fibre Raceway 300mm x 10mm to 12" x 4" Panduit duct	TC1279-492KIT
Adaptor kit 100mm Fibre Raceway to 4" Panduit duct	TC1279-173KIT

MOUNTING SOLUTIONS

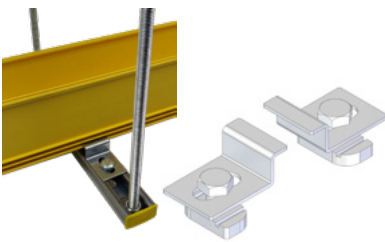
Prysmian Fibre Raceway mounting hardware is used to support the ducting raceway from different structures.



TC1279-DCUM10

We probably already have a mounting solution that meets your requirements

Metal mounting kits for steel-work or wall mounting
Provides vertical and horizontal mounting flexibility to steel-work or walls.



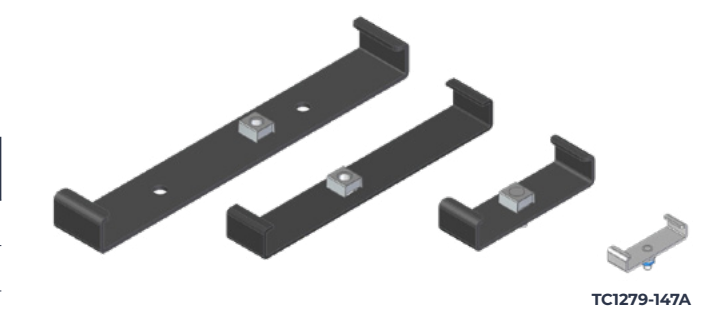
Only our clamps need to be ordered, the rest can be obtained in local hardware stores.
The ideal way to secure your duct to existing infrastructure is simply using horizontal Unistrut rails (cut to the size of duct width) on which the clamps are fixed with threaded rods on each side. Smooth fit on the Unistrut without any space in between.

TC1279-DCUM10
Universal duct clamp (pack of 10 pieces) for duct size 100mm, 220mm, 300mm

TC1279-DCU600
Universal duct clamp (pack of 10 pieces) for duct size 600mm

Mounting hardware duct “C” type brackets
This assembly consists of a standard (50mm, 100mm, 220mm, 300mm) duct-support bracket. This assembly is used where the duct is directly mounted to flat brackets with 13mm (1/2" clearance) dia holes.

SIZE	PART NO.
50mm	TC1279-147A
100mm	TC1279-16A
220mm	TC1279-15A
300mm	TC1279-297A



Suspension kits

These suspension-mounting bracket kits are used to attach either 300mm, 220mm or 100mm plastic duct to existing steelwork from above.

Note: All metal brackets are either nickel plated or black powdercoat paint



TC1279-297KIT
300mm heavy-duty suspension duct-mounting kit



TC1279-106KITA
220mm duct suspension-bracket kit (including 12mm threaded rod)



TC1279-297AKIT
300mm x 100mm duct system, mounting-bracket kit, suspension type, 1/2" with threaded rod

TC1279-106KITB
220mm duct suspension-bracket kit (including 16mm threaded rod)

TC1279-297BKIT
300mm x 10mm duct system, mounting-bracket kit, suspension type, 5/8" with threaded rod



TC1279-107KITA
100mm duct suspension-bracket kit (including 12mm threaded rod)



TC1279-106KIT
220mm duct suspension-bracket kit



TC1279-107KIT
100mm duct suspension-bracket kit

TC1279-107KITB
100mm duct suspension-bracket kit (including 16mm threaded rod)



TC1279-438A
600mm x 100mm duct mounting-bracket assembly

Ladder-rack mounting



TC1279-370KIT
100mm, 220mm, 300mm ladder-rack mount kit, large
This clamp is a means of attaching either 100mm, 220mm or 300mm duct systems to 1" and 2" ladder racks
Note: Heavy duty. Used in conjunction with "C" type mounting hardware

Note: Used in conjunction with "C" type mounting hardware

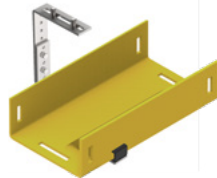


TC1279-155KIT
Ladder-rack mount kit, 100mm and 220mm duct
These clamps are a means of fixing either 100mm, 220mm duct systems to 1.5" and 2" ladder-racks
Note: Used in conjunction with "C" type mounting hardware

"C" rail-mounting kits

These kits are attached to the rail with two screws. Multiple holes provide vertical adjustment in 21mm increments.

- Simple clamp system adapts to "C" rail
- Suits 100mm, 220mm or 300mm duct systems
- Includes: nuts, screws and washers



TC1279-155AKIT
"C" rail-mounting kit, 100mm duct
Note: Includes 100mm duct bracket



TC1279-155BKIT
"C" rail-mounting kit, 220mm duct
Note: Includes 220mm duct bracket



TC1279-155CKIT
"C" rail-mounting kit, 300mm duct
Note: Includes 300mm duct bracket

Raised mounting kits



TC1279-13A
Mounting-bracket assembly, 220mm duct with M12 threaded rod
The mounting bracket provides an adjustable mounting mechanism for the 220mm plastic ducting system



TC1279-14A
Mounting-bracket assembly, 100mm duct with M12 threaded rod
The mounting bracket provides an adjustable mounting mechanism for the 100mm plastic ducting system



TOOLING COMPONENTS

Ducting slotting tool - foot operated

Features and benefits:

- Ducting can be easily aligned and positioned on slotting jig
- Fast and easy-to-use slotting mechanism which slots in seconds
- Compact, easy-to-transport unit which only weighs 8kg
- Steady and robust platform
- Ergonomically designed, no stress or heavy manual operation required as it only requires leg power
- Conforms to OHandS standards or/and Directive 2009/104/EC
- Repeatedly produces accurate slots
- Slots an end of duct in less than 30 seconds

Note: Ideal for large installations



DUCT-SUPPORT PLATE
TC1279-500-126KIT

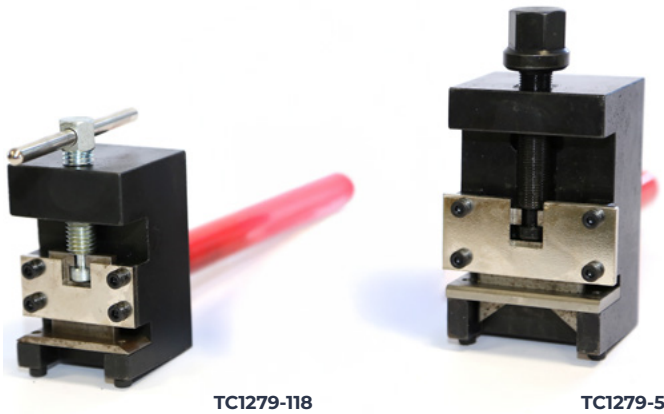
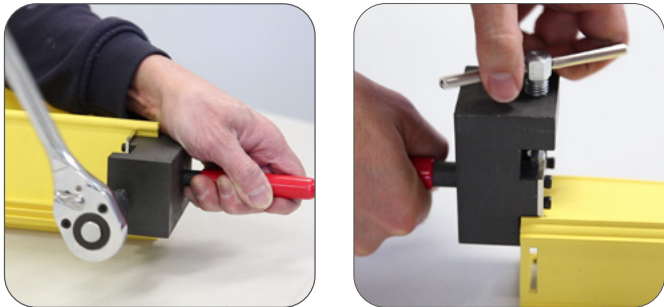
DUCT SIZE (MM)	DUCT SIZE (INCHES)	PART NO.
100mm x 100mm	4" x 4"	TC1279-23
220mm x 100mm	8" x 4"	TC1279-21
300mm x 100mm	12" x 4"	TC1279-275

PART NO.	DESCRIPTION
TC1279-500KIT	Foot-operated duct slotting tool (with tool box)

Side-slotting tool

The slotting tool is used to make a small slot in the bottom and both sides at the end/s of duct. This process is a simple mechanical means of preparing a shortened length duct for connection to another standard part: e.g. elbow, cross connector, tees, adaptor assembly, duct end or drop offs, etc.

PART NO.	DESCRIPTION
TC1279-230	for 100mm x 50mm duct (side slots only)
TC1279-51	for 100mm x 50mm duct (base slots only), for 220mm x 100mm, 300mm x 100mm, 100mm x 100mm
TC1279-118	for 50mm duct



TC1279-118

TC1279-51

Ducting hydraulic hand-held slotting tool

The hand-held hydraulic duct slotting tool is a revolutionary design that takes the stress and effort out of slotting duct. Take advantage of this new method of safely and easily slotting ducting, which will improve the efficiency of your installations and save you and your customer time and money.

DUCT SIZE (MM)	DUCT SIZE (INCHES)	PART NO.
100mm x 100mm	4" x 4"	TC1279-23
220mm x 100mm	8" x 4"	TC1279-21
300mm x 100mm	12" x 4"	TC1279-275

PART NO.	DESCRIPTION
TC1279-501	100mm hand hydraulic tool
TC1279-501-13S	100mm hand hydraulic tool head
TC1279-501KIT	100mm hand hydraulic tool kit with tool box

Features and benefits:

- No need to exert excessive force as the unit is hydraulic powered
- Safe and easy to use
- Ergonomically designed
- Compact design which is easy to transport and doesn't require excess storage space
- Saves you time by slotting duct quickly
- Allows you to slot an end of duct in less than a minute
- Lightweight, only 2kg
- Repeatedly produces accurate slots
- Slots a variety of duct sizes from 100mm x 50mm up to 300mm x 100mm



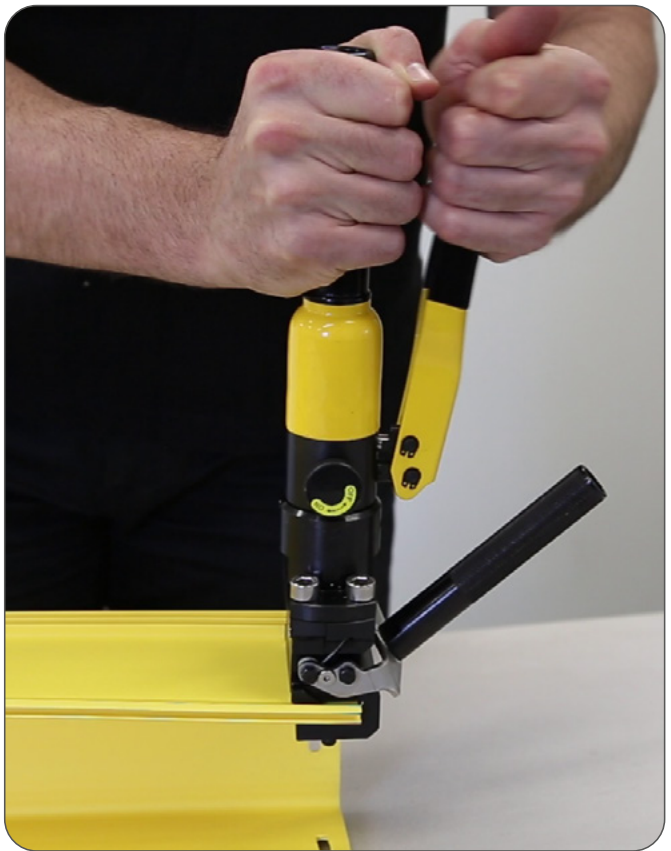
TC1279-501 100MM HAND HYDRAULIC TOOL



Look us up on Youtube for
tooling instructional videos



Warren and Brown



Mitre kits

Mitre boxes allow accurate and straight cuts on ducting, essential for the correct alignment of the slotting tools and joiners.



TC1279-118-07
Mitre box duct, 50mm

Look us up on Youtube for tooling instructional videos

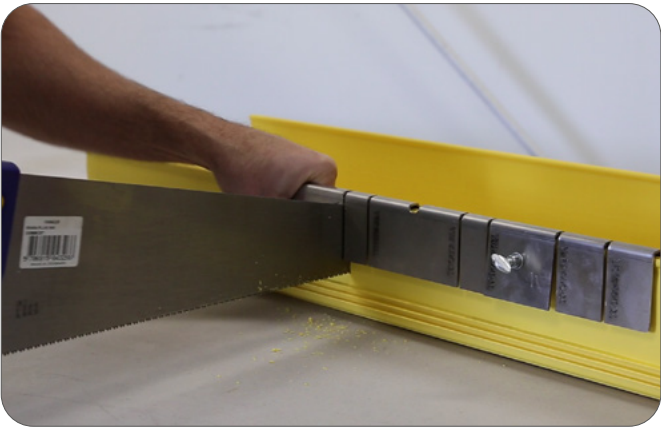
▶

Warren and Brown

🔍



TC1279-MITRE
Mitre box duct 100mm, 220mm, 300mm



TC1279-483A
Cut-out jig for drop-offs and breakout guides - suitable for all ducts from 50mm to 600mm

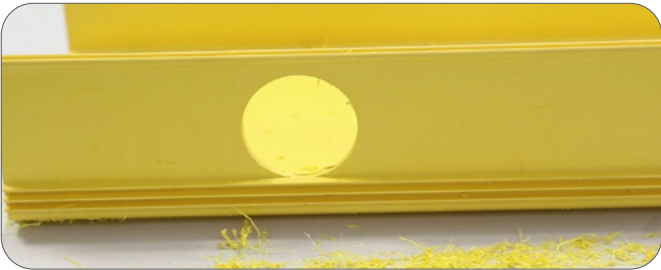
Duct spill-out tool

This kit is used to cut the 60mm hole in the side and bottom of the duct to accommodate drop-outs (TC1279-602A, TC1279-609A)

Note: If optic fibre cords already in duct, use TC1279-50-3 to protect the cords



TC1279-604KIT
Duct spill-out and installation template



Duct tool kits



TC1279-51A

Fibre spreader



TC1279-50-3
Fibre spreader and protector

TOOLING	PART-NR.	DUCTING SIZE					
		50/50MM	100/50MM	100/100MM	220/100MM	300/100MM	600/100MM
Mitre kits	TC1279-118-07	YES	–	–	–	–	–
	TC1279-MITRE	–	YES	YES	YES	YES	–
Slotting tools	TC1279-500A(KIT)	–	–	YES	YES	YES	–
	TC1279-501A(KIT)	–	–	YES	YES	YES	–
	TC1279-51A(KIT)	–	YES*	YES	YES	YES	–
Duct spill-out tool	TC1279-604KIT	–	–	YES	YES	YES	YES
	TC1279-118A(KIT)	–	YES*	–	–	–	–
	TC1279-483A	YES	YES	YES	YES	YES	YES
Fibre spreader	TC1279-50-3	YES	YES	YES	YES	YES	YES

* Both tools needed, side walls 118 and bottom 51

Corresponding W&B - Prysmian part numbers

WB PART NUMBER	PRYSMIAN PART NO.	DESCRIPTION
100X060	YYDSC04702	Panel Saw 100x060
62X41	YYDSC04701	Slotless Joiner Lock / Unlock Tool
TC1279-01	YYDSC04700	220mm x 100mm Horizontal Tee(220mm x 220mm)
TC1279-01A	YYDSC04368	220mm x 100mm Horizontal Tee & Lid (220mm x 220mm)
TC1279-03	YYDSC04699	100mm x 100mm Horizontal Tee (100mm x 100mm)
TC1279-03A	YYDSC04369	100mm x 100mm Horizontal Tee & Lid (100mm x 100mm)
TC1279-03AB	YYDSC04727	Horizontal Tee & Lid (100mm x 100mm) Black
TC1279-05	YYDSC04698	220mm x 100mm Hor. Red. RH (220mm to 100mm)
TC1279-05A	YYDSC04370	Hor. Reducer. RH & Lid (220mm to 100mm)
TC1279-07	YYDSC04697	220mm x 100mm Hor. Red. LH (220mm to 100mm)
TC1279-07A	YYDSC04696	Hor. Reducer LH & Lid(220mm to 100mm)
TC1279-09	YYDSC04695	220mm x 100mm Horizontal Tee (220mm x 100mm)
TC1279-09A	YYDSC04371	220mm x 100mm Horizontal Tee & Lid (220mm x 100mm)
TC1279-10	YYDSC04734	Lid Tee 220mm / 100 mm
TC1279-100	YYDSC04694	Convoluted Tube Split OD20mm L=2M
TC1279-103KIT	YYDSC04707	Support bracket Kit 100mm
TC1279-104KIT	YYDSC04493	WallMounting Bracket Suits 100mm duct
TC1279-106	YYDSC04735	Suspension Bracket 220mm
TC1279-106KIT	YYDSC04372	Suspension Bracket Mount. Kit 220mm duct
TC1279-106KITA	YYDSC04693	Brack.Mount.220mm duct-Incl 12mm Thr.Rod
TC1279-106KITB	YYDSC04692	Brack.Mount.220mm duct-Incl 16mm Thr.Rod
TC1279-107	YYDSC04736	Suspension Bracket 100mm
TC1279-107KIT	YYDSC04373	Suspension Bracket Mount. Kit 100mm duct
TC1279-107KITA	YYDSC04691	Brack.Mount.100mm duct-Incl 12mm Thr.Rod
TC1279-107KITB	YYDSC04690	Brack.Mount.100mm duct-Incl 16mm Thr.Rod
TC1279-11	YYDSC04689	220mm x 100mm Vertical Tee (100mm x 100mm Drop)
TC1279-111	YYDSC04688	100mm x 100mm Vertical Elbow 90 Deg Down
TC1279-111-30	YYDSC04687	100mm x 100mm Vertical Elbow 30 Deg Down
TC1279-111-30A	YYDSC04686	100mm x 100mm Vertical Elbow & Lid 30Deg Down
TC1279-111-30R	YYDSC04685	100mm x 100mm Vert. Elbow 30 Deg Down Retro
TC1279-111-45	YYDSC04684	100mm x 100mm Vertical Elbow 45 Deg Down
TC1279-111-45A	YYDSC04683	100mm x 100mm Vertical Elbow & Lid 45Deg Down
TC1279-111-45R	YYDSC04682	100mm x 100mm Vert.Elbow & Lid 45Deg Dwn Retro
TC1279-111A	YYDSC04374	100mm x 100mm Vertical Elbow & Lid 90Deg Down
TC1279-111AB	YYDSC04721	100mm x 100mm Vert.Elbow & Lid 90 Deg Down Blk
TC1279-111KIT	YYDSC04375	Side Drop-Off to 100mm x 100mm duct
TC1279-111R	YYDSC04681	100mm x 100mm Vert.Elbow & Lid 90Deg Dwn Retro
TC1279-113	YYDSC04680	100mm x 100mm Vertical Elbow 90 Deg Up
TC1279-113-30	YYDSC04679	100mm x 100mm Vertical Elbow 30 Deg Up
TC1279-113-30A	YYDSC04678	100mm x 100mm Vertical Elbow & Lid 30 Deg Up
TC1279-113-30R	YYDSC04677	100mm x 100mm Vert. Elbow & Lid 30Deg Up Retro
TC1279-113-45	YYDSC04676	100mm x 100mm Vertical Elbow 45 Deg Up
TC1279-113-45A	YYDSC04675	100mm x 100mm Vertical Elbow & Lid 45 Deg Up
TC1279-113-45R	YYDSC04674	100mm x 100mm Vert. Elbow & Lid 45Deg Up Retro

WB PART NUMBER	PRYSMIAN PART NO.	DESCRIPTION
TC1279-113A	YYDSC04376	100mm x 100mm Vertical Elbow & Lid 90 Deg Up
TC1279-113R	YYDSC04673	100mm x 100mm Vert. Elbow & Lid 90Deg Up Retro
TC1279-118	YYDSC04377	Side Slotting Tool (50mm x 50mm duct)
TC1279-118-07	YYDSC04672	Mitre Box (50mm & 30mm duct)
TC1279-118KIT	YYDSC04499	Duct Cut & Slot Tool Kit (50mm duct)
TC1279-11A	YYDSC04378	220mm x 100mm Vert. Tee & Lid 100mm x 100mm Drop
TC1279-11R	YYDSC04671	220mm x 100mm Vert.T & Lid Retro 100mm x 100mm Drp
TC1279-12	YYDSC04737	Lid for TC1279-11
TC1279-121A	YYDSC04670	Side Slotting Tool (30mmx30mm duct)
TC1279-123	YYDSC04669	220mm x 100mm Vertical Elbow 90 Deg Down
TC1279-123-30	YYDSC04668	220mm x 100mm Vertical Elbow 30 Deg Down
TC1279-123-30A	YYDSC04667	220mm x 100mm Vertical Elbow & Lid 30Deg Down
TC1279-123-30R	YYDSC04666	220mm x 100mm Vert. Elbow 30 Deg Down Retro
TC1279-123-45	YYDSC04665	220mm x 100mm Vertical Elbow 45 Deg Down
TC1279-123-45A	YYDSC04503	220mm x 100mm Vertical Elbow & Lid 45 Deg Down
TC1279-123-45R	YYDSC04664	220mm x 100mm Vert. Elb & Lid 45Deg Down Retro
TC1279-123A	YYDSC04663	220mm x 100mm Vertical Elbow & Lid 90Deg Down
TC1279-123R	YYDSC04662	220mm x 100mm Vert.Elbow & Lid 90Deg Down Retr
TC1279-125	YYDSC04661	220mm x 100mm Vertical Elbow 90 Deg Up
TC1279-125-30	YYDSC04660	220mm x 100mm Vertical Elbow 30 Up
TC1279-125-30A	YYDSC04659	220mm x 100mm Vertical Elbow & Lid 30 Deg Up
TC1279-125-30R	YYDSC04658	220mm x 100mm Vert. Elbow & Lid 30Deg Up Retro
TC1279-125-45	YYDSC04657	220mm x 100mm Vertical Elbow 45 Deg Up
TC1279-125-45A	YYDSC04502	220mm x 100mm Vertical Elbow & Lid 45 Deg Up
TC1279-125-45R	YYDSC04656	220mm x 100mm Vert. Elbow & Lid 45Deg Up Retro
TC1279-125A	YYDSC04655	220mm x 100mm Vertical Elbow & Lid 90 Deg Up
TC1279-125R	YYDSC04654	220mm x 100mm Vert. Elbow & Lid 90Deg Up Retro
TC1279-127	YYDSC04482	50mm x 50mm Endcap (2 x 20mm Knockouts)
TC1279-127B	YYDSC04492	50mm x 50mm Endcap (1 x 38mm Knockouts)
TC1279-127C	YYDSC04653	50mm x 50mm Endcap (1 x 38mm Cutout)
TC1279-127D	YYDSC04379	50mm x 50mm Endcap Tube outlet for 44mm Tube
TC1279-127F	YYDSC04485	50mm x 50mm (End Support Bracket)
TC1279-129KIT	YYDSC04652	Mounting Plate Kit Suits 30&50mm duct
TC1279-130KIT	YYDSC04651	Mounting Bracket Kit Suits 30&50mm Duct
TC1279-133KIT	YYDSC04466	WallMounting Bracket Suits 220mm duct
TC1279-139	YYDSC04484	50mm x 50mm Horizontal Cross (50mm x 50mm Cross)
TC1279-13A	YYDSC04650	Mount.Brack.220mm duct incl M12 Thr.Rod
TC1279-143	YYDSC04649	50mm x 50mm Vertical Elbow 90 Deg Up
TC1279-143-45A	YYDSC04647	50mm x 50mm Vertical Elbow 45 Deg Up
TC1279-143-45A	YYDSC04648	50mm x 50mm Vertical Elbow 45 Deg Up
TC1279-143-45R	YYDSC04646	50mm x 50mm Vert. Elbow & Lid 90 Deg Up Retro
TC1279-143A	YYDSC04488	50mm x 50mm Vertical Elbow & Lid 90 Deg Up
TC1279-143R	YYDSC04645	50mm x 50mm Vert. Elbow & Lid 45 Deg Up Retro
TC1279-145	YYDSC04644	50mm x 50mm Vertical Tee (50mm x 50mm Drop)

WB PART NUMBER	PRYSMIAN PART NO.	DESCRIPTION
TC1279-145A	YYDSC04491	50mm x 50mm Vertical Tee & Lid (50mm x 50mm Drop)
TC1279-145R	YYDSC04643	Vert. Tee & Lid Retrofit (50mm x 50mm Drop)
TC1279-147A	YYDSC04380	Mounting Bracket duct "C" Type 50mm
TC1279-147KIT	YYDSC04642	Mounting Bracket Kit (50mm)
TC1279-149KIT	YYDSC04738	LH ADAPTOR KIT 6" ADC TO W&B 220MM
TC1279-14A	YYDSC04381	Mount.Brack.100mm duct incl M12 Thr.Rod
TC1279-150KIT	YYDSC04739	RH ADAPTOR KIT 6" ADC TO W&B 220MM
TC1279-154KIT	YYDSC04641	Ladder Rack Mount. Assembly 50mm duct
TC1279-155AKIT	YYDSC04487	C Rail Mounting Kit Suits 100mm duct
TC1279-155BKIT	YYDSC04640	C Rail Mounting Kit Suits 220mm duct
TC1279-155CKIT	YYDSC04639	C Rail Mounting Kit Suits 300mm duct
TC1279-155KIT	YYDSC04638	Ladder Rack Mount. 100 & 220mm duct
TC1279-156	YYDSC04740	UNIVERSAL RADIUS GUIDE
TC1279-15A	YYDSC04382	Mounting Bracket duct "C" Type 220mm
TC1279-15WBT	YYDSC04637	Mounting Bracket duct "C" Type 220mm
TC1279-161KIT	YYDSC04636	Wall Mount. Ext. Kit 50 and 100mm duct
TC1279-16A	YYDSC04481	Mounting Bracket duct "C" Type 100mm
TC1279-16WBT	YYDSC04741	100MM MOUNTING BRACKET & BOLT
TC1279-170	YYDSC04635	Mounting Bracket Adaptor (Siemens Frame)
TC1279-171	YYDSC04634	Mounting Bracket Adaptor (Unistrut ™)
TC1279-178KIT	YYDSC04633	50mm x 50mm Storage Loop & Lid (Offset)
TC1279-183KIT	YYDSC04632	Mount.Brack.HD Wall&Strut 50, 100mm duct
TC1279-191KIT	YYDSC04631	220mm x 100mm Storage Loop & Lid (Offset)
TC1279-192KIT	YYDSC04630	100mm x 100mm Storage Loop & Lid (Offset)
TC1279-193A	YYDSC04629	300mm x 100mm Vertical Elbow & Lid 90 Deg Down
TC1279-197KIT	YYDSC04628	Vert.Strut Mount. 50,100mm & 220mm duct
TC1279-202KIT	YYDSC04383	100MM LADDER RACK MOUNT
TC1279-207KIT	YYDSC04627	220mm x 100mm Storage Loop & Lid (Inline)
TC1279-208KIT	YYDSC04501	100mm x 100mm Storage Loop & Lid (Inline)
TC1279-209KIT	YYDSC04626	50mm x 50mm Storage Loop & Lid (Inline)
TC1279-21	YYDSC04625	220mm x 100mm Duct
TC1279-212KIT	YYDSC04623	Duct Rad. Guide(outl. Trumpet) 10/pack
TC1279-212KIT	YYDSC04624	Duct Rad. Guide(outl. Trumpet) 10/pack
TC1279-218	YYDSC04622	100mm x 100mm Outlet Trumpet
TC1279-218A	YYDSC04384	100mm x 100mm Outlet Trumpet & Lid
TC1279-218AB	YYDSC04717	100mm x 100mm Outlet Trumpet & Lid Black
TC1279-21ASNM	YYDSC04447	220mm x 100mm Duct & Snap on Lid
TC1279-21M	YYDSC04704	220mm x 100mm Duct
TC1279-21SMSA	YYDSC04621	Fibre Cord 220mm Storge Management Assy
TC1279-223ASN	YYDSC04715	100mmx50mm Duct
TC1279-223SLXA	YYDSC04742	DUCT & LID ASSEMBLY 100X50 MM SLOTTED
TC1279-224A	YYDSC04711	100mmx50mm Horizontal Tee & Lid (100mm x 100mm)
TC1279-225	YYDSC04743	100mm x 50 mm TEE LID Hor
TC1279-226	YYDSC04710	100mmx50mm Joiner
TC1279-229	YYDSC04744	Lid Intra Assembly 100 mm
TC1279-22A	YYDSC04745	220MM LID - HINGED - 2 METRES LONG

WB PART NUMBER	PRYSMIAN PART NO.	DESCRIPTION
TC1279-22SKIT	YYDSC04620	Lid 220mm Retainer Clip 35mm (10 Pairs)
TC1279-22SKITA	YYDSC04619	Lid 220mm Retainer Clip 35mm (20 Pairs)
TC1279-22SNM	YYDSC04746	220 MM LID EXTRU. DUCT SYS.
TC1279-23	YYDSC04618	100mm x 100mm Duct
TC1279-230	YYDSC04617	Side Slotting Tool(100mmx50mm duct)
TC1279-231	YYDSC04616	Cut Out Tool (150mm)
TC1279-231KIT	YYDSC04385	Large Cut Out Tool 300,220,100,50mm duct
TC1279-232KIT	YYDSC04615	Side Drop-Off to 100mmx50mm duct
TC1279-236A	YYDSC04723	100mmx50mm Vertical Elbow & Lid 90 Deg Down
TC1279-23A	YYDSC04614	100mm x 100mm Duct & Hinged Lid
TC1279-23ASNM	YYDSC04448	100mm x 100mm Duct & Snap on Lid
TC1279-23ASNB	YYDSC04716	100mm x 100mm Duct & Snap on Lid Black
TC1279-23M	YYDSC04476	100mm x 100mm Duct
TC1279-23SL	YYDSC04613	100mm x 100mm Slotted Duct (Side Exit)
TC1279-23SLA	YYDSC04612	100mm x 100mm Slott Duct&Hinged Lid SideExit
TC1279-23SLASN	YYDSC04611	100mm x 100mm Slot.Duct&Snapon Lid SideExit
TC1279-24	YYDSC04747	100 MM LID EXTRU. DUCT SYS.
TC1279-240	YYDSC04610	Hor. Red. 100mm x 100mm to 100mmx50mm
TC1279-240A	YYDSC04609	Hor. Reducer & Lid (100x100 to 100mmx50mm)
TC1279-248A	YYDSC04386	100mm x 100mm Slottless Joiner
TC1279-248AB	YYDSC04714	100mm x 100mm Slottless Joiner Black
TC1279-248AO	YYDSC04713	100mm x 100mm Slottless Joiner Orange
TC1279-24A	YYDSC04748	100 MM Hinged lid
TC1279-24SKIT	YYDSC04608	Lid 100mm Retainer Clip 35mm (10 Pairs)
TC1279-24SKITA	YYDSC04607	Lid 100mm Retainer Clip 35mm (20 Pairs)
TC1279-25	YYDSC04387	220mm x 100mm Joiner
TC1279-250A	YYDSC04388	220mm x 100mm Slottless Joiner
TC1279-251	YYDSC04606	100mm x 100mm Slottless Endcap
TC1279-252	YYDSC04605	220mm x 100mm Slottless Endcap
TC1279-26	YYDSC04604	Convolutd Tube Æ50mm L=1 Meter (BLACK)
TC1279-26Y	YYDSC04389	Convolutd Tube ID50mm L=1M (YELLOW)
TC1279-27	YYDSC04390	100mm x 100mm Joiner
TC1279-274	YYDSC04603	Under Floor Mounting Bracket
TC1279-275	YYDSC04602	300mm x 100mm Duct
TC1279-275AM	YYDSC04703	300mm x 100mm Duct with Lid
TC1279-275M	YYDSC04708	300mm x 100mm Duct
TC1279-276M	YYDSC04712	300mm x 100mm Duct lid
TC1279-276SKITA	YYDSC04749	LID300mm Ret. Clip Kit 35mm wide 20pairs
TC1279-277	YYDSC04601	300mm x 100mm Vertical Tee (220mm x 100mm Drop)
TC1279-277A	YYDSC04391	300mm x 100mm Vert. Tee & Lid 220mm x 100mm Drop
TC1279-279A	YYDSC04486	300mm x 100mm Horizontal Tee & Lid (300mmx300mm)
TC1279-279IT	YYDSC04392	300MM ISLAND TEE ASSEMBLY
TC1279-27B	YYDSC04709	100mm x 100mm Joiner Black
TC1279-280	YYDSC04750	LID FOR TC1279-279
TC1279-281	YYDSC04600	300mm x 100mm Horizontal Reducer 300mmto220mm
TC1279-281A	YYDSC04393	300mm x 100mm Hor. Reducer&Lid 300mm to 220mm

WB PART NUMBER	PRYSMIAN PART NO.	DESCRIPTION
TC1279-283A	YYDSC04719	300mm 45o Up elbow assembly
TC1279-283AB	YYDSC04726	300mm 45o Up elbow assembly Black
TC1279-285A	YYDSC04718	300mm 45o Down elbow assembly
TC1279-287A	YYDSC04706	300mm x 100mm Joiner Slotless
TC1279-288	YYDSC04498	300mm x 100mm Slottless Endcap
TC1279-288A	YYDSC04394	300mm x 100mm Slottless Endcap Assembly
TC1279-288AB	YYDSC04479	300mm x 100mm Slottless Endcap Assembly
TC1279-28AB	YYDSC04725	300mm 45o Down elbow assembly Black
TC1279-29	YYDSC04599	220mm x 100mm Horizontal Elbow 90 Deg
TC1279-290A	YYDSC04598	Expr. Hor.Outlet Drop-Off 100mm x 100mm duct
TC1279-290ASL	YYDSC04490	Expr. Hor.Outlet Drop-Off 100mm x 100mm duct
TC1279-294	YYDSC04597	Ramp Up (Large) for 300,220&100mm duct
TC1279-29-45	YYDSC04596	220mm x 100mm Horizontal Elbow 45 Deg
TC1279-29-45A	YYDSC04497	220mm x 100mm Horizontal Elbow & Lid 45 Deg
TC1279-297A	YYDSC04395	Mounting Bracket duct "C" Type 300mm
TC1279-297AKIT	YYDSC04595	Mount. Brack.300mm duct-incl 1/2thr. rod
TC1279-297BKIT	YYDSC04594	Mount. Brack.300mm duct-incl 3/8thr. rod
TC1279-297KIT	YYDSC04396	Heavy Duty duct Mount Kit 300mm duct
TC1279-298KIT	YYDSC04593	300mm x 100mm Vertical Elbow & Lid 90 Deg Up
TC1279-29A	YYDSC04397	220mm x 100mm Horizontal Elbow & Lid 90 Deg
TC1279-30	YYDSC04751	Lid Hor. Elbow 90 degrees 220 mm
TC1279-300	YYDSC04592	300mm x 100mm Horizontal Cross (300mmx300mm)
TC1279-300A	YYDSC04398	Horizontal Cross & Lid (300mmx300mm)
TC1279-300L	YYDSC04752	LID FOR TC1279-300
TC1279-303A	YYDSC04591	Side Mount. Brack. HD 100,220,300mm duct
TC1279-304	YYDSC04753	300MM ELBOW 45 DEG. HORIZ. BODY
TC1279-304A	YYDSC04754	300MM ELBOW 45DEG HOR. DUCT & LID ASSY
TC1279-305	YYDSC04755	LID FOR 300MM ELBOW 45Deg HOR DUCT ASSY
TC1279-307ASL	YYDSC04399	Expr. Ver.Outlet Drop-Off 100mm x 100mm duct
TC1279-31	YYDSC04590	100mm x 100mm Horizontal Elbow 90 Deg
TC1279-31-45	YYDSC04589	100mm x 100mm Horizontal Elbow 45 Deg
TC1279-31-45A	YYDSC04588	100mm x 100mm Horizontal Elbow & Lid 45 Deg
TC1279-315KIT	YYDSC04587	300mm x 100mm Storage Loop & Lid (Offset)
TC1279-316	YYDSC04586	300mm x 100mm Horizontal Tee (300mmx220mm)
TC1279-316A	YYDSC04400	300mm x 100mm Hor. Tee & Lid (300mmx220mm)
TC1279-317	YYDSC04756	LID ONLY FOR 300MM TO 220MM TEE ASSEMBLY
TC1279-31A	YYDSC04401	100mm x 100mm Horizontal Elbow & Lid 90 Deg
TC1279-31AB	YYDSC04478	100mm x 100mm Horizontal Elbow & Lid 90 Deg
TC1279-320	YYDSC04480	300mm x 100mm Joiner
TC1279-320B	YYDSC04720	300mm x 100mm Joiner
TC1279-320KIT	YYDSC04705	300mm x 100mm Joiner with cage nut
TC1279-329	YYDSC04585	220mm x 100mm Vertical Tee (220mm x 100mm Drop)
TC1279-329A	YYDSC04584	220mm x 100mm Vertical T & Lid 220mm x 100mm Drop
TC1279-330	YYDSC04583	220mm x 100mm Outlet Trumpet
TC1279-330A	YYDSC04402	220mm x 100mm Outlet Trumpet & Lid
TC1279-331	YYDSC04582	300mm x 100mm Horizontal Cross (300mmx220mm)
TC1279-331A	YYDSC04403	Horizontal Cross & Lid (300mmx220mm)

WB PART NUMBER	PRYSMIAN PART NO.	DESCRIPTION
TC1279-350	YYDSC04581	Tube Split With Cover 50mm L=1M (BLK)
TC1279-36	YYDSC04757	SUSPENSION BRACKET 300MM per set 2
TC1279-370KIT	YYDSC04580	Ladder Rack Mount.Kit 100,220&300mm duct
TC1279-379	YYDSC04579	300mm x 100mm Outlet Trumpet
TC1279-379A	YYDSC04577	300mm x 100mm Outlet Trumpet & Lid
TC1279-379A	YYDSC04578	300mm x 100mm Outlet Trumpet & Lid
TC1279-379AB	YYDSC04722	300mm x 100mm Outlet Trumpet & Lid
TC1279-37A	YYDSC04576	220mm x 100mm 90 Deg Up / Down Enclosed
TC1279-387A	YYDSC04489	300mm x 100mm Horizontal Elbow & Lid 90 Deg
TC1279-387B	YYDSC04724	300mm x 100mm Horizontal Elbow & Lid 90 Deg
TC1279-393	YYDSC04575	100mmx220mm Horizontal Tee (100mmx220mm)
TC1279-393A	YYDSC04574	100mmx220mm Horizontal Tee & Lid (100mmx220mm)
TC1279-396	YYDSC04573	300mm x 100mm Horizontal Cross (300mm x 100mm)
TC1279-396A	YYDSC04572	Horizontal Cross & Lid (300mm x 100mm)
TC1279-398	YYDSC04571	300mm x 100mm Horizontal Tee (300mm x 100mm)
TC1279-398A	YYDSC04570	300mm x 100mm Horizontal Tee & Lid (300mm x 100mm)
TC1279-39A	YYDSC04496	100mm x 100mm 90 Deg Up / Down Enclosed
TC1279-406	YYDSC04404	600mmx100mm Duct
TC1279-406A	YYDSC04569	600mmx100mm Duct With Lid
TC1279-408	YYDSC04405	600mmx100mm Hor. Reducer (600mm to 300mm)
TC1279-408A	YYDSC04568	Horizontal Reducer (600mm t o300mm)With Lid
TC1279-410A	YYDSC04406	600mmx100mm Joiner
TC1279-411A	YYDSC04567	600mmx100mm Hor. Elbow 90 Deg With Lid
TC1279-411KIT	YYDSC04566	600mmx100mm Horizontal Elbow 90 Deg
TC1279-412	YYDSC04407	600mmx100mm Horizontal Tee (600mmx600mm)
TC1279-412A	YYDSC04565	Horizontal Tee (600mmx600mm) With Lid
TC1279-414	YYDSC04408	600mmx100mm Horizontal Elbow 45 Deg
TC1279-414A	YYDSC04564	600mmx100mm Hor. Elbow 45 Deg With Lid
TC1279-416	YYDSC04409	600mmx100mm Horizontal Cross (600mmx600mm)
TC1279-416A	YYDSC04563	600mmx100mm Horizontal Cross &Lid
TC1279-41A	YYDSC04758	SIDE DROP OFF 50 MM
TC1279-41KIT	YYDSC04410	Side Drop-Off to Æ50mm Convoluted Tube
TC1279-42	YYDSC04562	Ramp Up Small for 300,220&100mm duct
TC1279-425	YYDSC04561	600mmx100mm 45 Deg. Down Elbow Body
TC1279-425A	YYDSC04560	600mmx100mm Vert.Elbow Down 90Deg With Lid
TC1279-425KIT	YYDSC04559	600mmx100mm Vertical Elbow Down 90 Deg
TC1279-427	YYDSC04558	600mmx100mm 45 Deg. Up Elbow Body
TC1279-427A	YYDSC04557	600mmx100mm Vert. Elbow Up 90Deg With Lid
TC1279-427KIT	YYDSC04556	600mmx100mm Vertical Elbow Up 90 Deg
TC1279-435	YYDSC04555	600mmx100mm Endcap
TC1279-438A	YYDSC04411	Suspension Bracket Mount. Kit 600mm duct
TC1279-43KIT	YYDSC04759	HINGE KIT - O.F. DUCTING
TC1279-45	YYDSC04554	220mm x 100mm Horizontal Elbow 30 Deg
TC1279-452A	YYDSC04412	Break-Out 90° Down 100mm x 100mm
TC1279-452KIT	YYDSC04494	Break-Out Kit 90° Down 100mm x 100mm
TC1279-454A	YYDSC04413	Break-Out 90° Down 220mm x 100mm
TC1279-454KIT	YYDSC04553	Break-Out Kit 90° Down 220mm x 100mm

WB PART NUMBER	PRYSMIAN PART NO.	DESCRIPTION
TC1279-456	YYDSC04414	100mm 88mm Tube Outlet
TC1279-457	YYDSC04552	220mm Dual 88mm Tube Outlets
TC1279-458	YYDSC04415	Tube Flex 75mm ID/88mm OD L=2M Yellow
TC1279-458-1	YYDSC04551	Tube Flex 75mm ID/88mmODxL=1M Yellow
TC1279-45A	YYDSC04550	220mm x 100mm Horizontal Elbow & Lid 30 Deg
TC1279-47	YYDSC04549	100mm x 100mm Horizontal Elbow 30 Deg
TC1279-471	YYDSC04548	Tube Flex 65mm ID/83mmODxL=2M Yellow
TC1279-471-1	YYDSC04547	Tube Flex 65mm ID/83mmODxL=1M Yellow
TC1279-472KIT	YYDSC04760	100MM TO ADC 6" RH ADAPTOR KIT
TC1279-473KIT	YYDSC04761	ADAPTOR KIT LH 100x100 to ADC 6"
TC1279-47A	YYDSC04546	100mm x 100mm Horizontal Elbow & Lid 30 Deg
TC1279-483A	YYDSC04416	Cut Out Jig Drops 300, 220, 100 & 50mm duct
TC1279-485KIT	YYDSC04545	300mm x 100mm Storage Loop & Lid (Inline)
TC1279-50	YYDSC04544	Cut Out Tool (90mm)
TC1279-500	YYDSC04543	Foot SlottingTool 300&220&100mm duct
TC1279-500KIT	YYDSC04417	Foot SlottingTool+Box 300&220&100mm duct
TC1279-501	YYDSC04542	Hand Hydr Tool 300&220&100mm duct
TC1279-501KIT	YYDSC04418	Hand Hydr. Tool+Box 300&220&100mm duct
TC1279-502M	YYDSC04541	100mm Hand Hydraulic Tool (50mm duct)
TC1279-50-3	YYDSC04540	Fibre Spreader & Protector
TC1279-50KIT	YYDSC04419	Small Cut Out Tool 300,220,100,50mm duct
TC1279-51	YYDSC04467	Side Slot. Tool 300/220/100mm x 100mm duct
TC1279-51A	YYDSC04420	SLOT TOOL & WRENCH KIT 100+220
TC1279-51KIT	YYDSC04500	Cut & Slot Tool Kit 220&100mm duct
TC1279-53	YYDSC04539	Convoluted Tube OD50mm L=2M (BLACK)
TC1279-53IASL	YYDSC04421	Expr.Ver.Outlet Drop-Off 50mm x 50mm duct Ye
TC1279-53IASLB	YYDSC04477	Expr.Ver.Outlet Drop-Off 50mm x 50mm duct Bl
TC1279-53Y	YYDSC04422	Convoluted Tube ID50mm L=2M (YELLOW)
TC1279-54	YYDSC04538	Convoluted Tube OD25mm L=2M BLACK
TC1279-56	YYDSC04423	220mm x 100mm Endcap
TC1279-57	YYDSC04424	100mm x 100mm Endcap
TC1279-570KIT	YYDSC04537	Duct Cable Separator 300,220 &100mm duct
TC1279-571KIT	YYDSC04536	Support Bracket Suits100mm x 100mm duct
TC1279-572KIT	YYDSC04535	Support Bracket Suits 220mm x 100mm duct
TC1279-57B	YYDSC04534	100mm x 100mm Endcap (2 x 32mm Holes)
TC1279-57C	YYDSC04425	100mm x 100mm Endcap (2 x 48mm Holes)
TC1279-57D	YYDSC04426	100mm x 100mm Endcap (End Support Bracket)
TC1279-59	YYDSC04533	Mounting Bracket Adaptor (41 mm Strut)
TC1279-602A	YYDSC04427	Side Spill-out,Straight Outlet 44mmOD
TC1279-604KIT	YYDSC04428	Duct Spill Out & Installation Template
TC1279-609A	YYDSC04429	Side Spill-out 90°Up/Down Outlet 44OD
TC1279-61	YYDSC04532	220mm x 100mm Hor. Cross 220x220mm Cross
TC1279-61A	YYDSC04430	Horizontal Cross & Lid(220x220mm Cross)
TC1279-63	YYDSC04531	100mm x 100mm Vertical Tee (100mm x 100mm Drop)
TC1279-63A	YYDSC04431	Vertical Tee & Lid (100mm x 100mm Drop)
TC1279-63R	YYDSC04495	Vert. Tee & Lid Retrofit (100mm x 100mm Drop)
TC1279-64	YYDSC04762	Lid for 63 Tee 220 / 100 mm

WB PART NUMBER	PRYSMIAN PART NO.	DESCRIPTION
TC1279-65	YYDSC04530	220mm x 100mm Hor. Cross 220mm x 100mm Cross
TC1279-65A	YYDSC04432	220mm x 100mm Horizontal Cross & Lid
TC1279-68	YYDSC04529	Convoluted Tube OD38mm L=2Meter BLACK
TC1279-71	YYDSC04528	Horizontal Cross (100mm x 100mm Cross)
TC1279-71A	YYDSC04433	100mm x 100mm Horizontal Cross & Lid
TC1279-73	YYDSC04434	50mm x 50mm Joiner
TC1279-75	YYDSC04527	50mm x 50mm Horizontal Tee
TC1279-75A	YYDSC04435	50mm x 50mm Horizontal Tee & Lid
TC1279-77	YYDSC04526	50mm x 50mm Horizontal Elbow 90 Deg
TC1279-77-30	YYDSC04525	50mm x 50mm Horizontal Elbow 30 Deg
TC1279-77-30A	YYDSC04524	50mm x 50mm Horizontal Elbow & Lid 30 Deg
TC1279-77-45	YYDSC04523	50mm x 50mm Horizontal Elbow 45 Deg
TC1279-77-45A	YYDSC04522	50mm x 50mm Horizontal Elbow & Lid 45 Deg
TC1279-77A	YYDSC04436	50mm x 50mm Horizontal Elbow & Lid 90 Deg
TC1279-78KIT	YYDSC04521	Mounting Bracket Kit Suits 30&50mm Duct
TC1279-81	YYDSC04520	50mm x 50mm Duct
TC1279-81A	YYDSC04437	50mm x 50mm Duct & Hinged Lid
TC1279-81SL	YYDSC04519	50mm x 50mm Slotted Duct (Side Exit)
TC1279-81SLA	YYDSC04518	50mm x 50mm Slott. Duct&Hinged Lid Side Exit
TC1279-81SLXA	YYDSC04438	50mm x 50mm Slotted Duct&Snapon Lid SideExit
TC1279-81XA	YYDSC04439	50mm x 50mm Duct & Snap on Lid
TC1279-85BLK	YYDSC04517	Convoluted Tube 50mm Square L=350mm BLK
TC1279-85KIT	YYDSC04516	Openable Tube 50mm Sqr L=350mm Yellow
TC1279-85YEL	YYDSC04440	Convoluted Tube 50mm Square L=350mm Yel
TC1279-87	YYDSC04515	50mm x 50mm Vertical Elbow 90 Deg Down
TC1279-87-30	YYDSC04514	50mm x 50mm Vertical Elbow 30 Deg Down
TC1279-87-30A	YYDSC04513	50mm x 50mm Vertical Elbow & Lid 30 Deg Down
TC1279-87-45	YYDSC04512	50mm x 50mm Vertical Elbow 45 Deg Down
TC1279-87-45A	YYDSC04511	50mm x 50mm Vertical Elbow & Lid 45 Deg Down
TC1279-87A	YYDSC04483	50mm x 50mm Vertical Elbow & Lid 90 Deg Down
TC1279-87R	YYDSC04510	50mm x 50mm Vert. Elbow & Lid 90Deg Down Retro
TC1279-89KIT	YYDSC04441	Side Drop-Off to 50mmSqr Convoluted Tube
TC1279-91	YYDSC04509	Hor. Red. (100mm x 100mm to 50mm x 50mm)
TC1279-91A	YYDSC04508	Reducer & Lid (100x100 to 50mm x 50mm)
TC1279-93	YYDSC04507	50mm x 50mm Outlet Trumpet (50mm x 50mm)
TC1279-93A	YYDSC04469	50mm x 50mm Outlet Trumpet & Lid (50mm x 50mm)
TC1279-93KIT	YYDSC04442	Side Drop-Off to 50mm duct
TC1279-97	YYDSC04506	Horizontal. Reducer. 50mm x 50mm To 30x30mm
TC1279-97A	YYDSC04505	Hor. Red. & Lid(50mm x 50mm To 30x30mm)
TC1279-DCU600	YYDSC04504	Duct Clamp Universal 600MM 10 pcs/bag
TC1279-DCUM-10	YYDSC04443	UNIVERSAL DUCT CLAMP FOR 100/220/300MM
TC1279-MITRE	YYDSC04445	Mitre Box (300 & 220 & 100mm duct)
TC1279-TKIT	YYDSC04446	Duct Cut & Slot Combination Tool Kit (300mm, 220mm, 100mm, 50mm & 30mm duct)



Europe

Prysmian SpA

Via Chiese 6
20126 Milano
Italy

South America

Prysmian Brazil

Av. Pirelli
1.100 - Sorocaba
Brazil

North America

Prysmian North America HQ

4 Tesseneer Road
Highland Heights
KY 41076

Asia

Singapore Cables Manufactures PTE. LTD.

No 20. Jurong Port Road,
Jurong Town, Singapore
619094

Contact us:

connectivity.solutions@prysmian.com

www.prysmian.com

Follow us

